



Agilent MicroLab Software

Operation Manual

Notices

Manual Part Number

0020-410

Edition 10, January 2024

Copyright

© Agilent Technologies, Inc. 2024

No part of this manual may be reproduced in any form or by any means (including electronic storage and retrieval or translation into a foreign language) without prior agreement and written consent from Agilent Technologies, Inc. as governed by United States and international copyright laws.

Agilent Technologies Australia [M] Pty Ltd

679 Springvale Road

Mulgrave, Victoria 3170, Australia

www.agilent.com

Software Revision

This guide is valid for the 5.7 revision or higher of Agilent MicroLab, until superseded.

Warranty

The material contained in this document is provided "as is," and is subject to being changed, without notice, in future editions. Further, to the maximum extent permitted by applicable law, Agilent disclaims all warranties, either express or implied, with regard to this manual and any information contained herein, including but not limited to the implied warranties of merchantability and fitness for a particular purpose. Agilent shall not be liable for errors or for incidental or consequential damages in connection with the furnishing, use, or performance of this document or of any information contained herein. Should Agilent and the user have a separate written agreement with warranty terms covering the material in this document that conflict with these terms, the warranty terms in the separate agreement shall control.

Technology Licenses

The hardware and/or software described in this document are furnished under a license and may be used or copied only in accordance with the terms of such license.

Restricted Rights Legend

U.S. Government Restricted Rights. Software and technical data rights granted to the federal government include only those rights customarily provided to end user customers. Agilent provides this customary commercial license in Software and technical data pursuant to FAR 12.211 (Technical Data) and 12.212 (Computer Software) and, for the Department of Defense, DFARS 252.227-7015 (Technical Data - Commercial Items) and DFARS 227.7202-3 (Rights in Commercial Computer Software or Computer Software Documentation).

Safety Notices

CAUTION

A **CAUTION** notice denotes a hazard. It calls attention to an operating procedure, practice, or the like that, if not correctly performed or adhered to, could result in damage to the product or loss of important data. Do not proceed beyond a **CAUTION** notice until the indicated conditions are fully understood and met.

Contents

1	Introduction	7
	Supported Instruments	8
2	MicroLab Mobile	9
	Connecting the PDA to the instrument for Bluetooth Communication	9
	Logging on for the first time	11
	Software IQ on 4300 Handheld FTIR	12
	Managing users	13
	Adding	13
	Role definitions	13
	Common icons	14
	Home screen	15
	Status	15
	Start	15
	Method	15
	Reference Method	15
	Log Off	16
	Lock	16
	Menu	16
	Method screen	17
	Methods list	17
	Activate	18
	Editing	18
3	MicroLab PC	19
	Home screen	19

Contents

Status	19
Start	20
Methods	20
Reference Methods	20
Logoff & Exit	20
Lock	20
Previous Results	20
Advanced Features	20
Methods	21
Main Page	21
Creating a New Method/Editing an Existing Method	21
Advanced Features	33
System Check	33
Diagnostics	33
MAC Addresses	34
Library Management	34
User Management	35
Multivariate method transfer from GRAMS PLS/IQ to MicroLab PC	36
Exporting the PLS/IQ *.cal file to ASCII	36
Generating the method file	36
MicroLab quantitative model transfer from MicroLab Expert to MicroLab PC	37
Using Pre-Sample Alignment Check	38
Transferring edited methods to MicroLab Mobile	40
Using MicroLab Lite Synchronize	40
Copying via My Computer	41
Moving files in a 21 CFR part 11 enabled environment	41

Contents

System Check	42
4 MicroLab Quant	43
Home screen	43
Logoff	44
Lock	44
Start New Model	44
Import Models	48
21 CFR Part 11 Features	49
21 CFR part 11	49
E-Sign	49
5 MicroLab OQ	51
Operational Qualification (OQ)	51
Diagnostics Verification of Operational System	51
Performance Validation	52
Perform the OQ	52
OQ Report	53
6 MicroLab with 21 CFR Part 11	55
SCM	55
SDA	56
21 CFR Part 11 Software Components in MicroLab	57
Lock	57
E-sign	57
Reason for Change	58
21 CFR part 11	59
7 Measuring Samples	61

Contents

Cleaning the sample interface	61
Collecting a background measurement	62
Collecting the sample measurement	62
8 Reviewing Results	65
MicroLab Mobile	65
Results screen	65
Handling data	65
Previous results	67
MicroLab PC/MicroLab Lite	68
Results screen	69
Importing spectra into GRAMS	74
MicroLab Report Creation	76
Assigning a Report Template to a Method	76
Creating a new Report Template	76
9 Updates and Troubleshooting	79
Firmware update	79
Troubleshooting	79
Initialization failure	79
Report template creation failure	80
Gain changes did not save	80
Database access issues	80
Appendix A: MicroLab File Type	81

The Agilent MicroLab software suite is designed to run Agilent 4100 ExoScan, 4200 FlexScan, 4300 Handheld FTIR, 4500 Series, 5500 Series and Cary 630 FTIR spectrometers. The software is available in two different packages: MicroLab FTIR Software, and MicroLab Mobile Software.

MicroLab FTIR software package consists of the following four modules:

- MicroLab PC – connects & controls an instrument
- MicroLab Quant - for quantitative method development
- MicroLab OQ - for operational qualification
- MicroLab Lite - data review and method development

MicroLab Mobile software package comes with the following:

- MicroLab Mobile
- MicroLab FTIR software package

NOTE

MicroLab Mobile software package is only applicable with 4300 Handheld FTIR and instruments that used to ship with a handheld PC (PDA): Agilent 4100 ExoScan, 4200 FlexScan and 4500 Series.

Agilent no longer ships PDA with these instruments.

The optional MicroLab Pharma software package (part number G4984-64000) and MicroLab Pharma Upgrade software package (part number G4985-64000) provide built-in technical controls that ensure the security of the data, control access, and facilitate compliance as defined by US FDA 21 CFR Part 11, EU Annex 11, and similar national electronic record regulations.

In this document, reference to 21 CFR Part 11 software, environments, features, etc. is any data integrity environment/component that is using the MicroLab Pharma software.

The MicroLab software packages provide similar functionality and structure, with the following exceptions:

- Methods cannot be edited on the MicroLab Mobile software.
- Data cannot be collected on the MicroLab Lite software.
- An instrument must be connected to run the MicroLab PC and MicroLab Mobile software with the PC.

Introduction

The software is designed to be easy to use for both advanced and novice users, with menu-driven screens and instructions to walk users through analyses.

The software incorporates a user logon; each user has defined 'roles' that are assigned by the administrator. These roles enable administrators to limit the methods and actions allowed for lower level users.

Supported Instruments

This software build is suitable for use with the Agilent Cary 630, 4100 ExoScan, 4200 FlexScan, 4300 Handheld, 4500 Portable and 5500 Compact FTIR instruments.

2 MicroLab Mobile

Connecting the PDA to the instrument for Bluetooth Communication	9
Logging on for the first time	11
Software IQ on 4300 Handheld FTIR	12
Managing users	13
Common icons	14
Home screen	15
Method screen	17

To install or upgrade your software, see the MicroLab software installation instructions provided with the software.

NOTE

MicroLab Mobile software package is only applicable with 4300 Handheld FTIR and instruments that used to ship with PDA: Agilent 4100 ExoScan, 4200 FlexScan and 4500 Series.

Connecting the PDA to the instrument for Bluetooth Communication

NOTE

This section is only applicable to Agilent 4100 ExoScan, 4200 FlexScan and 4500 FTIR Series instruments.

- 1 To configure the Bluetooth connection between the instrument and the PDA, click on the Bluetooth icon from the home page. If “flight mode” is enabled, disable it. Click on the Bluetooth bar to turn the Bluetooth Communication on if it is not already in the “ON” mode.
- 2 From the Menu, choose **Bluetooth Settings**.
- 3 In the Devices tab, clear any devices by selecting the device with the Stylus and holding it in place until the menu appears. Then click **Delete**.

- 4 Once the devices are cleared, click on **Add a New Device**. Wait for the list of Bluetooth enabled devices to appear and select the appropriate device. Click **Next** at the bottom of the screen.
- 5 The connection with the handheld devices requires a universal passcode. The passcode required is **7890**. Enter this value and select **Next**. The system will then test the connection to the portable FTIR device and add the device.
- 6 Once the device is added, select **Advanced** and ensure that the Serial Port configuration box is checked. The box defaults to unchecked and must be turned on in order for the device to work properly. Click **Save**.
 - The advanced option only appears right after the connection. If it disappears and returns to the device tab, select the device just connected by clicking on it with the stylus. This will bring you to the Advanced Portion above for the serial port communication setting.
- 7 Once the serial port has been set, select the **COM Ports** tab at the bottom of the Bluetooth settings screen.
- 8 Select **New Outgoing Port**. Select the device just added to the Bluetooth communication configuration and click Next.
- 9 The default COM Port for version 4.0 and later of MicroLab Mobile is COM 1. Set the COM Port to COM 1 and UNCHECK the **Secure Connection** box. Once you have done this, select finish in the bottom section of the screen.
 - If there is a communication issue with the COM Port selected, the PDA will alert you via an error message. The COM Port default for communication can be changed via communication file for the portable/handheld device. Please contact your Agilent support personnel if additional installation instructions are needed to change the COM Port settings.
- 10 This will bring you back to the initial Bluetooth setting Configuration screen. Click **OK** in the upright corner and close any programs open until you return to the main home screen.
- 11 Choose the Start Menu and MicroLab Mobile should appear as a selection.

Logging on for the first time

To log on to MicroLab Mobile for the very first time:

- 1 Handheld and embedded PCs shipped with the Agilent 4100 ExoScan FTIR and Agilent 4500 Series FTIR systems are supplied with a shortcut to the MicroLab Mobile software installed in the Start menu. To start the software, click **Start** then click the **MicroLab Mobile** icon. The software can also be started by browsing to My Device\Program Files\MicroLab Mobile and clicking the **MicroLabMobileEX.exe** icon or selecting Programs from the start menu and selecting the appropriate icon there.

The Agilent 4300 Handheld FTIR is shipped with MicroLab Mobile preloaded in the embedded computer. MicroLab Mobile will automatically start when the 4300 Handheld FTIR is turned on.

- 2 The software will launch and display a message indicating that an initial synchronization is required. This synchronization will upload the profiles created in SCM (for 21 CFR Part 11 enabled software) and all methods in the Public Mobile Methods folder to the PDA or embedded computer. See Page 41 for information on moving files in a 21 CFR Part 11 environment.
- 3 Open MicroLab Lite on the PC and log in.
 - For PDA connection, ensure that Windows Mobile Device Center is installed on the PC. Install the app from the MicroLab software installation disk.
- 4 Connect the communications cable from the PDA or embedded computer to the PC.
- 5 If the synchronization is not triggered automatically, click **Advanced Features** and then **Synchronize**.
- 6 Click **New**.
- 7 Click **Get Connected Device Name**. The device name will appear in the field.
- 8 Click **Browse** and then navigate to the Public Mobile Results folder. All data collected will be saved to this folder.
- 9 Click **OK**.
- 10 Click **Sync** and then **Yes** on the displayed message to begin synchronization.
- 11 Click **OK** once the synchronization is complete.
- 12 On the PDA or embedded computer, re-launch MicroLab Mobile and then log in when the Security screen is displayed. You will use the same log in credentials that were created using MicroLab Lite or PC. The system should then display the Home Screen.

For 21 CFR Part 11 environments: Login with a profile that has the MicroLab Mobile privilege. Enter the appropriate user name for the profile created in SCM. The Groups and Projects fields will populate automatically. Enter the password and then click **Login**.

NOTE

Both the user name and password are case-sensitive.

When MicroLab Mobile 21 CFR Part 11 is used, passwords must be alpha numeric only. Do not use special characters such as \$, @, and so on.

It is recommended to log in to either MicroLab Mobile or MicroLab Lite, but not both at the same time with the same Profile when the handheld device is connected to the PC.

Software IQ on 4300 Handheld FTIR

NOTE

This section is only applicable to the Agilent 4300 Handheld FTIR.

MicroLab Mobile has an IQ/OQ feature embedded in the instrument on-board computer. Perform the software Installation Qualification (IQ) test to ensure that all relevant files are installed.

To run the IQ/OQ:

- 1 On the Login screen, click on **Exit** to close MicroLab Mobile.
- 2 Click **OK** when the Exit Confirmation dialog box appears.
- 3 The screen will enter into 'Pass Through' mode where two icons can be seen. The top icon is MicroLab Mobile, and the bottom icon represents software IQ/OQ.
- 4 Select the bottom icon to run **IQ/OQ**.
- 5 The Login screen will appear. Enter your username and password to Login.
- 6 Click on the **Next** arrow button at the bottom right corner to perform the IQ – Software test.
- 7 The results page appears. Ensure that the installation qualification PASS.
- 8 Click on the **Next** arrow button to generate an IQ report.
- 9 Click **Exit** to return to the 'Pass Through' mode.

Managing users

The Advanced Features option enables an administrator to manage authorized users and alter the MicroLab system features. The system is installed with multiple user levels: Admin, Developer, Technician, E-signer and Service. Additional users can be added at any time. It is advisable to set up the system with the desired users and passwords on initial launch if multiple operators will be using the system.

NOTE

Only users with administration privileges can access User Management. This feature is not available when the 21 CFR Part 11 environment is enabled. All user management functions are performed in the Spectroscopy Configuration Manager (SCM) software. For more information see the SCM User's Guide provided with the software.

Adding

To add a user to the system:

- 1 Tap the **Advanced Features** button on the MicroLab Mobile Home screen.
- 2 Click **User Management**.
- 3 Click **Add New User**.
- 4 Enter a personalized UserID in the text box.
- 5 Enter the user's complete name.
- 6 Insert a new password.
- 7 Identify the role of the new user (Admin, Service, Developer, and Technician).
- 8 Click **Apply Changes**.
- 9 A window will appear notifying you that you will be logged off the system. You will be forced to login again after the changes have been applied.

NOTE

The system will automatically log off the user. The new UserID will appear in the User Name drop-down menu on the Logon screen.

Role definitions

Service: The Service role provides access to all instrument parameters within a method including the sampling technology applicable for the method.

Admin: The Admin (administration) role is reserved for the person(s) responsible for continual maintenance and changes to MicroLab software, including editing

methods, creating new methods, defining public methods, conducting instrument verification, and controlling user access.

Developer: The Developer role allows access to system performance validation in addition the ability to edit and run methods. However, this role does not have access to User Management functions or system diagnostics.

Technician: The Technician role is for standard users of the system. The technician only has access to run methods defined by Admin as public. In addition, the technician cannot review data, conduct system validation or modify methods.

E-Sign: Designation used to allow users to e-sign methods and results at various levels of data acquisition and data review. This level is typically only used in the 21 CFR Part 11 version of the MicroLab Software.

NOTE

Only the Admin and Developer roles have access to Advanced Features.

User Management screen

Add New User: Adds a user to the system. A user name, password, and access level must be assigned. The full name is also required.

Delete User: Permanently deletes a user's profile from the MicroLab Mobile system.

Reset Password: Enables the administrator to change the password of the currently selected user.

Reset Security: Deletes all customized users and resets the three predefined users (Service, Admin and User). This option will also reset the security if it has been disabled with the Disable Security option.

Disable Security: Removes all security features. When security is disabled, no password is required, and all users have administrator privileges. Security can be restored by tapping the Reset Security button and then entering the initial Admin account information.

Common icons

These icons appear throughout the software:

Home: Returns the software to the initial Home screen.

Menu: Displays menu options.

Next: Takes the software to the next step in the data collection process.

Home screen

The Home screen is the first displayed screen in MicroLab following login. From the Home screen, you can start a method, measure a reference sample, open the Method Selection dialog box, open the Previous Results dialog box or open the Advanced Features dialog box. The sampling module or interface should be changed at the Home screen. All procedures begin and end at the Home screen.

Status

In the upper right corner of the screen, a small circle appears. This circle gives a color indicating the status of the instrument connected to the MicroLab software. The circle will be green when the system is operating within the factory-defined parameters. A red or yellow light indicates a parameter outside of specification. When a red or yellow light condition cannot be resolved, contact Agilent for assistance. All parameters used to determine system readiness are listed in Advanced Features > Diagnostics. Parameters outside limits will be listed in red on the Diagnostics screen.

Just above the ready light is a battery indicator. The battery indicator shows the level of charge remaining on the instrument batteries. The charge level of the batteries running the handheld PC is not indicated on the MicroLab software.

Start

The Start button begins a sample measurement using the currently selected method. The currently selected method is shown in the upper left corner of the Home screen.

Method

The Method button opens the Method Selection dialog box. Users without Admin privileges can only select methods designated as Public by the administrator. See the Method Selection instructions below.

Reference Method

The Reference Method button enables the collection of a reference sample for a component method. Some component methods present concentrations as a percentage increase or decrease. For these calculations, a reference of the in-specification sample is needed to calculate these starting values. Also, the

MicroLab Mobile

Reference Method saves the spectrum of the in specification (new) material for later visual comparison.

Log Off

The Log Off button exits the current user and returns the MicroLab Mobile software to the Logon screen. From there, the Exit button can be tapped to close the software.

Lock

This is available in 21 CFR Part 11 environments only. Use to Lock the software to control access while unattended. See the MicroLab 21 CFR Part 11 section on Page 55 for more information.

Menu

The menu contains:

- Previous Results
- Advanced Features

Previous Results

Enables viewing of previously collected data. Only Service, Admin and Developer roles have access to Previous Results.

21 CFR part 11

With a Results file open, click the 21 CFR part 11 button to display an audit trail with a list of actions performed while creating or editing a model.

See the MicroLab 21 CFR part 11 section on Page 55 for more information on this feature.

Advanced Features

The Advanced Features screen provides access to Diagnostics, System Check, User Management, and Library Management for Admin, Service and Developer roles.

System Check includes the following instrument tests: Performance (Signal to Noise), Stability Test, Laser Frequency Calibration Check, and Spectral Resolution Check. Refer to the appropriate instrument operation manual for more information on Diagnostics and System Check.

Sampling Interface

The Advanced Features screen also allows the user to access the Sampling Interface selection for the 4100 ExoScan FTIR systems. This is important for methods that are tied directly to the sampling interface as well as to link performance specifications to the sampling device. The appropriate sampling interface must be selected for either of those to work appropriately.

Method screen

Methods define instrument collection parameters and data analysis within the MicroLab software. Methods can be defined to only collect data, collect and compare collected data to a predefined library or collect data and perform a quantitative analysis on that data or peak analysis. The three predefined method types are (1) data collection, (2) qualitative (library) searches and (3) component (quantitative or peak analysis) methods for Agilent 4500t/5500t and Cary 630 FTIR spectrometers. For questions and additional information on specifications for predefined methods, contact Agilent.

MicroLab Mobile only allows for selection of predefined methods. Editing of methods must be conducted on a separate computer operating MicroLab PC or MicroLab Lite software. To be viewable within the Method dialog box, methods developed with PC and Lite versions of the software should be transferred to the following directory on the handheld or embedded controller: @\Program Files\MicroLab Mobile\Methods.

In a 21 CFR part 11 environment, method transfer occurs during synchronization.

Methods list

Displays a list of methods created for the MicroLab PC application software. To move up or down the method list, simply touch the stylus to the list and drag the list across the screen.

NOTE

A system administrator limits accessibility of methods. The system administrator must select the check boxes along the left edge of the screen; this enables operation of methods for all technician level users. For users with the Technician role, this screen will display only those methods enabled previously by a system administrator.

Activate

The Activate button selects the highlighted method and closes the screen. The software returns to the Home screen. Check to make sure the correct method is active. If the incorrect method appears, return to the Methods screen and choose an alternative method. To do this, tap the Select Methods button, highlight the desired method and tap Activate.

Editing

Method editing is not available on the MicroLab Mobile software. In order to edit a method, you must use the MicroLab Lite software installed on a separate computer. Once the method is established, it can be transferred to the handheld or embedded PC for use with MicroLab Mobile.

NOTE

For instruments with PDA, MicroLab Lite software should be installed on a computer containing Windows Mobile Device Center in order to easily transfer methods and data. Windows Mobile Device Center can be installed from the MicroLab software installation disk.

3

MicroLab PC

Home screen	19
Methods	21
MicroLab quantitative model transfer from MicroLab Expert to MicroLab PC	37
Using Pre-Sample Alignment Check	38
Transferring edited methods to MicroLab Mobile	40
System Check	42

Home screen

The Home screen is the first displayed screen in MicroLab PC following logon. All procedures begin and end at the Home screen.

The following options can be selected from the Home screen:

- Start.
- Methods.
- Reference Templates.
- Logoff.
- Previous Results.
- Advanced Features.

Status

In the upper left of the screen, the Status button should be green and display READY. If the field is yellow or red, click the Diagnostics button under the Advanced Features option to identify the problem. When a red or yellow light condition cannot be resolved, contact Agilent for assistance.

NOTE

For certain interface/instrument combinations it is expected behavior for the status to display as yellow during data collection (this is especially true for the external reflectance interfaces).

MicroLab PC

Start

The Start button begins a sample measurement using the activated method. The activated method is shown in the upper right corner of the Home screen.

Methods

The Methods button opens the Method Selection dialog box. Users without Admin privileges can only activate methods designated as Public by the administrator.

See [Page 21](#) for more information on Methods.

Reference Methods

The Reference Template button enables the creation of new reference method templates, the editing of existing reference method templates and the activation of a chosen reference method template.

Logoff & Exit

The Logoff screen enables different users to log on and off the system. The Exit button closes the MicroLab PC software.

Lock

This is available in 21 CFR part 11 environments only. Use to Lock the software to control access while unattended. See the MicroLab 21 CFR part 11 section on [Page 55](#) for more information.

Previous Results

Once you have performed your analysis, you can access your previous results via the Home screen. After clicking Previous Results, a screen will appear listing the samples that have been run. The samples will be named based on the chosen naming conventions.

Advanced Features

From the Advanced Features screen, the following options may be selected:

- System Check.
- Diagnostics.
- MAC Addresses.

MicroLab PC

- Library Management.
- User Management.
- Change Password.

See [Page 19](#) for more information on Advanced Features.

Methods

Main Page

Methods list: Displays a list of methods created for the MicroLab PC application software. Any methods present here will also appear in Microlab Lite.

Delete: Deletes the currently selected method; only accessible by users with Admin rights. This is not available in 21 CFR part 11 environments.

Import: This is available in 21 CFR part 11 environments only. Import CFR and non-CFR methods. CFR methods will retain the old audit trail although all signing will be removed. Once imported, these methods can be used in a CFR environment. Imported non-CFR methods are read-only.

New: Creates a new method; only accessible by users with Admin rights.

Print: This system feature enables the user to print a copy of the selected method's instrumental and method details.

Edit: Opens the currently selected method for editing; only accessible by users with Admin rights.

Activate: Selects the currently highlighted method as the method to be used. In order to collect data using a particular method, it must first be activated.

NOTE

Only methods checked in the Public tick box column will be viewable or activatable by non-Admin level users.

Creating a New Method/Editing an Existing Method

Info page

The Info page is used to set basic information relating to the chosen method. This page defaults to a bare method.

Method Name: This field specifies the method name; the method name will be displayed in the method list. The method name cannot be edited from the Info page. It is defined upon the initial **Save** of a new method, or when choosing to **Save As..** with an existing method that has been edited.

Developer: This field specifies the user who developed the method.

Comment: This field is made available to the user to input any special information concerning the method.

NOTE

The default method that is supplied with the MicroLab software is intended as a placeholder only. Agilent do not recommend using this method.

Type page

The Type page is common to all types of methods and is used to specify the pre-data collection check parameters.

Method Type: Three types of methods are available in the MicroLab PC software:

- **Components:** Quantitative prediction methods or spectral analysis. An infrared spectrum is collected then a predefined quantitative prediction is made from that data or peak height / area type analysis. Several components can be defined, each with their own quantitative calibration in a single method. Also has functions to measure peak height/area/center of gravity/noise.
- **Data Collect Only:** Collect and display the infrared spectrum only. No further analysis is performed on the collected data.
- **Qualitative Search:** Collect an infrared spectrum and search it against a predefined spectral library or several libraries. The results of this method will be the top matches to the spectral library based on the chosen search algorithm.

Check for Clean Crystal Prior to Collecting Background: This option enables or disables the system checks of the cleanliness of the ATR crystal or sample cell prior to collecting a background. This option is recommended for ATR interfaces only.

- **Clean Scans:** Sets the number of clean scans performed.
- **Threshold:** Sets the upper absorbance threshold for the clean scan.

NOTE

The clean scan threshold may require adjustment over time based on experimental requirements.

Background: Two options exist for collection of the background:

- **Collect new Background on every Sample:** This requires the collection of a new background spectrum for every sample. This is the recommended option for best data quality, as it provides the best correction for water vapor, carbon dioxide and other atmospheric variations.
- **Background Valid time limit:** If this option is selected, background is collected at time intervals, and samples can be collected in sequence without measuring a background spectrum in between samples. The time limit can be set in minutes, hours and days.

NOTE

Valid time limits may be set based on application requirements and expected changes in experimental conditions. The frequent and timely collection of background spectra is vital to data quality.

Y-Axis Units: This optional function specifies the Y-axis scale: Absorbance, Transmittance or Reflectance.

Clamp Max. Y-value: This option will display values of absorbance over the specified value as the clamp max y-value. This is a useful option when bands that are not used analytically may be off-scale. If this feature is selected, the off-scale bands will appear 'flat-topped' and not adversely affect the displayed scale. This option is only available when Absorbance is selected as Y-Axis Units.

Minimum Y Threshold: Set the minimum threshold on the Y-axis. This option is only available when Absorbance is selected as Y-Axis Units and is used to advise of insufficient signal. When enabled, if the detected signal is below the specified value at the beginning of the data collection, an alert will appear to suggest repositioning the sample prior to continuing the scan. This function is only performed on the initial spectral scan.

NOTE

The clamping of the Y-axis is typically used in the transmission interface to limit the highest recorded absorbance to enable better modelling of in scale peaks. Typically, a value of 2 is used. The default maximum value is 5 Abs equivalent to 0.0001T (0.001%T)

Show Pre-Sample Alignment Check: This option enables and starts the pre sample alignment check. Refer to Page 38 for more information on Pre-Sample Alignment Check.

Show Sampling Continuity Check: This option enables or disables the sample continuity check. This check is typically enabled for handheld devices to make sure the sample is kept in the focus of the sampling technology during measurement.

NOTE

The **Show Pre-Sample Alignment** and **Show Sampling Continuity** checks are intended for External Reflectance interfaces/modules only. These checks are not applicable to ATR interfaces.

Enable Classic View: This option enables or disables the classic view for the graphics window. This is only available when the method is set to Data Collect Only.

See Page 71 for more information on the Data Collect Only graphics window options.

Instrument page

The Instrument page is common to all method types and is where the instrument settings used for processing the collected data are specified.

Spectral Range (cm⁻¹): This specifies the upper and lower limits of the spectral range in wavenumbers. Select **Full** to enable the default detector range for data acquisition. The range may vary according to the instrument series and may be increased or decreased.

Background Scan: This specifies the number of scans to be collected in the background measurement. Additional scans will produce higher signal-to-noise; however, the measurement time increases proportional to the number of scans.

Sample Scans: This specifies the number of scans to be collected in the sample measurement. As with the background measurement, additional scans increase the signal-to-noise, but also increase the amount of time. The sample scans should be equal or less than the number of background scans. Typically, the background and sample are collected with the same number of scans.

Resolution (cm⁻¹): This specifies the spectral resolution. For condensed phase samples, most measurements can be made with 4 cm⁻¹ resolution.

NOTE

Selection of appropriate resolution is depending on application requirements. A higher resolution (lower wavenumber value i.e 2cm⁻¹) will result in a slightly slower scan rate, with an increase in data density and no# of points. A typical spectra collected at 4cm⁻¹ without any Zero-filling results in a file of about 32 Kb.

Zero Fill Factor: This specifies the zero-filling factor used for Fourier transformation of the interferogram into an energy spectrum.

Apodization: This specifies the apodization function used for Fourier transformation of the interferogram into an energy spectrum: None (Boxcar), Triangular or Happ-Genzel.

Phase Correct: The standard Mertz method is applied to correct for phase differences.

Sampling Technology: Select the sampling technology: Transmission Cell, Reflectance, ATR, Gas Cell or other. This is an optional field. The method may fail to activate if the method selected sampling technology does not match the actual interface.

Set Method Gain: This option is used to save a gain value in the method for routine analysis. This is typically used for specific instrument setups in combination with a specific interface, and where an appropriate background cap employed.

Normalize Quantitative results to Pathlengths (μm): This option is only applicable to Transmission Cell and Gas Cell Sampling Technology

Sampling Subtype: Select the sampling subtype according to the Sampling Technology chosen.

- **Transmission Cell:** Tumbler, DialPath, or 630 Transmission Module.
- **Reflectance:** Diffuse, Specular, or Grazing Angle.
- **ATR:** 1-Bounce, 3-Bounce, 5-Bounce, 9-Bounce, ZnSe 5-Bounce, Ge 1-Bounce, Diamond 1-Bounce, or ZnSe 1-Bounce.

Detector Type: Select instrument detector type.

Store GPS Data: This functionality is only applicable to Agilent 4300 Handheld FTIR. This option enables GPS data (Global Positioning System) to be stored when collecting spectra. The GPS data will show the longitude and latitude of the place where the spectrum has been recorded.

Require GPS Data: This functionality is only applicable to Agilent 4300 Handheld FTIR. This option enables or disables GPS data as mandatory information whenever collecting spectra. In case the instrument does not support providing GPS data, this option should be disabled. Otherwise data collection is refused. Do not use this option when indoors or in areas lacking satellite coverage.

Libraries page

The Libraries page is only available when the Qualitative Search method type is selected. The first column of the displayed list describes the Library name and the second column indicates if the Library contains ATR spectra. Libraries may be added or removed from this page.

For more information on Libraries, refer to the Library Management section on Page 33.

Search page

The Search page is only available when the Qualitative Search method type is selected. This page is used to configure how the chosen method will search through the selected libraries.

Search Algorithm: The search algorithm drop-down menu offers the following options for manipulating the search function:

- Euclidean.
- Absolute Value.
- Derivative Absolute Value.
- Least Squares.
- Derivative Least Squares.
- Correlation.
- Derivative Correlation.
- Similarity.
- Derivative Similarity.
- Extended Correlation.

Derivative algorithm gap: This field is only available when a derivative type search algorithm is selected. The field is used to select the gap size under which the derivative is applied (the gaps between the points used for the computation). A value of '1' is equivalent to applying the standard Norris Gap derivative. The value can be greater than 1 and will depend on the interface and spectral features for optimum effect.

Minimum high quality: This field is used to designate a minimum value threshold between 0-100 (%) for the quality of library hits that will be displayed. Any quality value result (index x 100) that falls below the specified value will be omitted from the search results.

Maximum Hits Displayed: This field is used to limit the size of the list of minimum high-quality library hit results to the specified quantity. For example, choosing 12 will display the top 12 ranked index results that have surpassed the minimum hit quality.

Quality Critical Threshold: This field sets the upper threshold for the color-coding feature within the quality search results. If the **Quality Marginal Threshold** option has not been chosen, any search result below the quality critical threshold will be displayed in red (value must be between 0 and 1, decimal values accepted). This parameter is linked to the index value. If no Quality Critical Threshold is set, color coding will not be applied.

Quality Marginal Threshold: This optional field sets the lower limit threshold for the marginal search results. Any result which falls between the quality marginal, and quality critical threshold will be displayed in yellow (value must be between 0 and 1, decimal values accepted).

NOTE

The threshold quality direction and color grading are automatically adjusted to suit the selected algorithm.

Display Metadata: Select this check box to display metadata corresponding to the chosen sample. This includes information such as the samples rank, description, and hazard status. This feature is not available in 21 CFR part 11 environments.

Auto Residual Search: Enabling this check box will automatically apply a residual search function to the collected spectra.

- When "Top Hit" is selected, the Auto Residual function will subtract the initial top library hit from the spectra, re-search the chosen libraries and display the resultant top residual hit.

NOTE

When "Top Hit" is selected, only the resultant top residual hit will be displayed (the actual top hit will not be displayed).

- When "Defined Spectrum" is selected, the Auto Residual function will subtract a user defined spectra from the collected spectra and then search the chosen library and display the top defined residual hit.

NOTE

The Defined Spectrum file must be an Agilent Result File in *.a2r format and chosen from the results folder.

Exclude Search Regions (cm⁻¹): This optional field is used to add a search exclusion region to the spectra. This will remove unwanted wavenumber regions, (such as that of the crystal intrinsic absorptions) from the spectra to allow for cleaner results. It can also be used to focus the search for example to only the fingerprint region.

Components page (Component Methods)

The Components page lists components defined for that method. Components are quantitative calibrations for constituents of a sample. Multiple components can be defined for each method.

Add: This button adds a new user component to the method. This button will display the Add Component dialog box (see below).

Remove: This button removes the selected component from the method.

Edit: This button enables editing of the parameters used for the selected component calibration. This button will display the Edit Component dialog box (see below).

Add Component dialog box: The Add Component dialog box enables the addition or editing of components. This dialog box provides settings for the component calibration, the display settings and the limits for that component. The component limits enable color-coded display of the component results.

Component Name: This specifies the name of the component that will be displayed both in the component list and the results. For clarity, the name should include the units of the result.

Calculation Type: This field specifies the type of calculation to be used. Calculation types include univariate (Peak Height, Peak Height with Single Baseline, Peak Height with Dual Baseline, Peak Area, Peak Area with Single Baseline, Peak Area with Dual Baseline), noise calculation (RMS Noise), peak position (Peak Position (Center of Gravity)) and multivariate (Quant Model). The Quant Model calculation type is also used with MicroLab Quant univariate or multivariate calibrations.

NOTE

The linear fit for a univariate calibration using peak height peak area or peak ratio must be conducted in third party software (such as Microsoft Excel). The MicroLab Quant software can be used to create complete univariate calibrations without the use of third-party software.

NOTE

Multivariate calibrations are conducted in the Thermo Galactic PLS/IQ Plus software and exported to a text format readable by the MicroLab PC software, or Eigenvector Solo Plus Model Exporter in XML format, or in MicroLab Expert (with Quant module). See instructions below for details on exporting calibrations.

Peak Start, Peak Stop:

- For univariate and peak position calculations, these define the peak to be used.
- For a peak height calculation, the largest value between this region will be selected.
- For a peak area, these are the limits of the area calculation.
- For a center of gravity, these are the limits between which the center of gravity will be calculated.
- For a multivariate (Quant), this will be the limit of the display range.

Baseline 1 Start, Baseline 1 Stop: These points define the area from which the first point of a baseline will be calculated. For a single point baseline, only Baseline 1 will be used. The baseline will be taken as the minimum value within this range.

Baseline 2 Start, Baseline 2 Stop: These points define the area from which the second point of a baseline will be calculated. The baseline will be taken as the minimum value within this range.

Constituent: This feature is only applicable when 'Quant Model' is selected as Calculation Type, and only applies to Agilent MicroLab Expert Quant Models (*.a2q). The constituents used in the multivariate model will appear in the drop-down menu.

NOTE

The use of Agilent MicroLab Expert Quant Models (*.a2q) files requires the installation of MicroLab Expert with Quant functionality on the same device.

Scaling: This section defines a linear calibration to be applied to the data. This can be used with any of the peak definitions (Peak Height, Peak Area, and so on), or to modify the value generated by a multivariate (Quant) method. Often, this is used to change the value to an appropriate scale.

- **Scale (x value):** The Scale is the slope of a linear calibration equation. In the equation for a linear fit, $y=mx+b$, scale is 'm'.
- **Offset:** The Offset is the Y-axis offset for a linear calibration. In the equation for a linear fit, $y=mx+b$, offset is 'b'.
- **Decimal Digits to Report:** This defines the number of decimal places that will be reported in the answer.

Thresholds: This section defines limits that the MicroLab PC software will use to color-code the displayed results and reports. Values that are between the Marginal High and Critical High, or the Marginal Low and Critical Low thresholds, will be displayed in yellow. Values above the Marginal High or below the Marginal Low thresholds will be displayed in red. All other values will be displayed in green.

Calc Value As: Values can be calculated from the following options:

- Actual Value.
- Percent Low.
- Percent High.

NOTE

Percent High and Percent Low options require a Critical High reference value. The reference value is in effect the 100% reference value. The calculated value will be reported as a % of the reference value.

Component Reporting page

Component Reporting enables the method developer to determine when a component is shown in both the Results screen and the report. Only selected components that are selected in the Display column will be shown on the screen and the report.

Edit Component Reporting Condition dialog box

Additionally, the method developer can choose to report a component only under certain conditions. For instance, the developer can specify that a component is reported only when its value is within the range for which it has been calibrated. This enables calibrations over several ranges (high, medium and low) to be present in a method. If specified, the software will only report the concentration from the calibration that is in range. For multivariate methods, any of the method statistical measurements (Mahalanobis Distance, F-test, and so on) can be used to determine if a value should be reported.

Report As: This section enables the developer to choose if the component is reported as the calculated value or as a text string based on that value. Used with the Boolean logic in the condition setting, this allows text-based results, such as 'out of specification' or 'good', to be displayed instead of numeric results.

Component/Diagnostic: This drop-down list shows all of the diagnostic information that can be used to make a display logic choice.

Test State: Enables specification of the state of the diagnostic. This is used with 'Value' below.

Value: The value of the diagnostic that is used with the test state in order to determine if the component will be displayed.

Example 1: For a simple univariate method, two components may be specified for a single analyte; one component would have a valid calibration over a low range and the other would have a valid calibration over a high range. The developer may prefer that only the appropriate range be reported. In this example, the component will be called 'area' and the high range will be valid from 1000 to 5000 ppm. For this example, Area will be selected for the Component/diagnostic. First, the Test State of ">=" will be selected, along with a value of 1000. After this is Added, the "And" qualifier will be selected. Then the Test State of "<" will be selected with a value of 5000. In this example, the area component will now only be reported if the value is between 1000 and 5000.

Example 2: For a multivariate (PLS) method, one may have several components specified. Each component may have a different multivariate calibration. You may only want the component that has a calibration set that is most closely related to the unknown sample. In this case, the developer would select the component/diagnostic to be MDistance (Mahalanobis Distance), the test state to be <= and the value to be 3. This would only report values that have a Mahalanobis Distance less than three, which indicates that the sample is statistically within the group of the calibration set.

Custom Fields page

Custom fields are administrator defined fields that appear at the start of a chosen method. The user of the method then completes the field. The fields can be a date, text or a number and can only be added or deleted by the administrator. These fields will be visible on the Results screen and the report. Many optional fields may be appended to a method, depending on specific user requirements.

Recommend page

The recommendations will be displayed on the Results screen following sample analysis. The messages are a unique feature; they give the user the ability to customize results to their specific needs and parameters.

Reports page

The reports page is common to all the methods types and is used to assign an Available Report Template to the current method, or remove a Selected Report Template from the current method. Where available, multiple report templates may be added or removed simultaneously.

Available Report Templates: Report templates are provided for specific types of methods.

- Data Collect Only can use the Spectrum report template.
- Component methods can use the Spectrum or Component Report templates.
- Qualitative search methods can use the Oil Report, Spectrum, Spectrum Overlaid, Spectrum Stacked, Zoomed Spectrum Overlaid and Zoomed Spectrum Stacked templates.

It is also possible to create your own custom report templates. For more information on report templates, refer to [Section 8 on Page 76](#).

- **Results Folder:** This specifies the location within one of the following folders where the results will be saved.
- For all systems, beginning with Version 5.3, all user definable and interactive call files are kept in C:\Users\Public\Documents\Agilent\MicroLab or C:\Users\Public\Public Documents\Agilent\MicroLab.

If this field is left blank, the files are saved directly into the Results folder: C:\Users\Public\Documents\Agilent\MicroLab\Results.

For 21 CFR part 11, when the field is left blank the default results folder is VAIMDB_Public(000)\Public Results.

A different folder can be entered for saving the files within the Results directory. If the method is transferred to a system running MicroLab Mobile, the folder will automatically update to the appropriate folder on the mobile device. There is also

an option for an auto-report feature. Check this box to automatically generate any and all reports associated with the method in question when a sample is collected using it.

Adding/Removing Report Templates to/from the current Method

The reports listed in the “Available Report Templates” column are not activated until they are added to the method. To add a report to the current method:

- 1 Highlight the desired report/reports from the Available Report Templates column.
- 2 Click **Add ->**.

At the completion of the method, any report that has been added to the “Available Report Templates” column will be available for selection by the user. If the **Auto-Report All Selected Reports** option is selected, all reports listed in the Available Report Templates column will be automatically printed.

To remove a report from the current method:

- 1 Highlight the desired report/reports from the “Selected Report Templates” column.
- 2 Click **<- Remove**.

The removed reports will now appear back in the Available Report Templates column.

Results Folder: Specifies the file path where the selected reports will be saved.

Results Naming: MicroLab has an auto save feature that creates unique identification numbers that are exclusive to each analysis. All files are available to all authorized users and can be reviewed under the Previous Results button. An administrator has an option of choosing a format that best fits their needs.

- **Sample ID + increment (Sample ID required):** The results name will correspond with the sample ID and a four digit increment. i.e. Sample_0000.
- **Date Time:** The results name will correspond with a date and time stamp of the analysis.
- **Sample ID + Date Time:** The results name will contain the sample ID, date, and time of the analysis.

Auto-Export: MicroLab has an auto-export function that allows the user to automatically export the results file at the time of data acquisition. MicroLab can generate *.csv, *.spc and *.asp file types for importing into a variety of third-party software programs. *.spc is a universal spectra data file required for data use in

GRAMS or in Eigenvector. *.asp file formats are simply an ASCII output of the Y data with a header defined X.

NOTE

The Sample ID is entered by the user during analysis. If the user fails to enter a Sample ID, the system will automatically create a date and time stamp. The user must always update the Sample ID when running multiple samples. MicroLab PC will store the previously entered sample ID.

Advanced Features

System Check

System Check includes the following instrument tests:

- Performance (Signal to Noise).
- Stability Test.
- Laser Frequency Calibration Check.
- Spectral Resolution Check.

Refer to the appropriate instrument operation manual for more information on System Check.

Diagnostics

The diagnostics page displays important diagnostics and general information about the instrument including:

- Instrument status
 - Energy (Counts).
 - Battery (AC Power or Battery %).
 - Source (Current/Voltage).
 - Laser (Counts).
- Component temperatures (°C).
- Version information.

This page also allows:

- Resetting of the Clean and Background validity.
- Configuration of the Date Time format.

MAC Addresses

The MAC Addresses page displays the current MAC addresses for the system and allows the addresses to be copied to the clipboard for exporting.

Library Management

The library management page displays library information such as stored library names and contents. This page also allows for the creation of new libraries, the deletion of existing libraries and the editing of current library entries.

NOTE

Library entries can not be edited or deleted from licensed libraries.

Creating a new library

- 1 Select the **New Library** button to the right-hand side of the library list window.
The "Create Library" window will appear.
- 2 Enter the **Library Name**.
- 3 Enter an optional **Comment** to be attached to the Library, if required.
- 4 Choose the type of **Library Spectra**:
 - Baseline Corrected.
 - ATR Spectra.
- 5 Choose the **Y Type**:
 - Absorbance.
 - Reflectance.
 - Transmittance.
- 6 Choose the **Lib Bytes**. This designates the number of bytes used to save each spectra. A value of 2 is typically appropriate for user made libraries.
- 7 Choose whether to **Auto detect from first library entry**. When active, this function uses the first spectra in the library to determine the first X (cm^{-1}), last X (cm^{-1}) and the number of points. With this function deactivated, the user may manually select the range for library matching and the number of points.
- 8 Click **Create**.

NOTE

Agilent do not recommend applying ATR correction to specular reflectance data, grazing angle data or diffuse reflectance data.

Editing a current library

To add an entry to an existing library:

- 1 Select the existing library file (.lib) from the advanced features and library management.
- 2 Click "Add to Library".
- 3 Select the appropriate *.a2r library entry file.
- 4 Click "Open".

The "Importing Results Entry" dialog box will appear. This box allows the name and optional CAS# to be applied to the entry.

- 5 Click "OK".

NOTE

Editing the Custom Information for a sample in one library automatically edits the information for all entries with that CAS# in the same library and all other libraries.

To remove an entry from an existing library:

- 1 Select the existing library file (.lib) from the list.
- 2 Click "Delete From Lib".
- 3 Click "OK".

NOTE

Deleted library entries are not removed from the library. They remain in the library index with a check mark placed in the "Deleted" column to identify them as omitted from future library scans.

NOTE

Agilent recommends to only add spectra of the same sampling type (e.g., ATR) in one library.

Custom Information

The Custom Information window displays Identification and Data information relating to the chosen library entry, where available. This page also allows for the user addition of Class, Notes and Handling information relating to that library entry.

User Management

The user management page can be used to edit usernames, roles and modify user security.

Refer to [Page 13](#) for more information on user management.

Multivariate method transfer from GRAMS PLS/IQ to MicroLab PC

Exporting the PLS/IQ *.cal file to ASCII

To export the PLS/IQ *.cal file to ASCII:

- 1 Generate a PLS/IQ *.cal file using the PLS/IQ module. To save a calibration in PLS/IQ, use the procedure 'Galactic GRAMS: Saving a Calibration from the Experiment' from the GRAMS Help File. For questions and additional information on the GRAMS Help File, contact Agilent.
- 2 From the main GRAMS screen, click **Add-ons > PLS/IQ > Export Calibration**. An 'Open' dialog box will be displayed.
- 3 Choose the appropriate *.cal file and click **Open**. An Export dialog box will be displayed.
- 4 The first section lists the selected calibration file. The second section lists the exported file type; the output file type should be **ASCII Text (*.txt)**.
- 5 Click **Next**. A 'Save As' dialog box will be displayed.
- 6 Browse to C:\Users\Public\Documents\Agilent\MicroLab\models before saving the file.
- 7 Enter an appropriate name and click **Open**. The calibration file will be exported. The software returns to the Export dialog box.
- 8 Click **Cancel** to return to GRAMS.

Generating the method file

To generate the method file in MicroLab PC:

- 1 From MicroLab PC or MicroLab Lite, click the **Method** button.
- 2 In the Method dialog box, click the **New** button.
- 3 On the method **Type** page, choose **Components** from the Method Type drop-down list.
- 4 Click the **Components** page.
- 5 On the Components page, click the **Add** button.
- 6 In the Add Component dialog box, specify a Name for the component. By default, the component name is the text that will appear next to the value when the method is run by the end user. The name should be descriptive of the property being predicted.

- 7 For a multivariate (PLS) method, choose **Quant Model** as the Calculation Type. An Open file dialog box will appear.
- 8 Choose the appropriate calibration text file (exported from Galactic GRAMS in Step 7 of 'Exporting the PLS/IQ *.cal file to ASCII') and click **Open**.
- 9 Other options available in the Add Components dialog box are listed below:

The options available in the Add/Edit Component dialog box are listed below:

- a **Quant Start and Quant Stop:** These set a frequency range to be displayed when the component is selected from the Results screen. If this is left blank, the entire spectrum is displayed.
 - b **Scaling:** The scaling section will apply a linear scaling to the result generated from the Quant model.
 - c **Thresholds:** These values set the display colors for the component result. If the component value is above or below the critical values, the result will be displayed in red. If the component value is between the critical and the marginal values, the result will be displayed in yellow. Otherwise, the result will be displayed in green.
 - d **Calc Value As:** Changes the display between an actual component value, a % of the critical high value or a % of the critical low value.
- 10 Once all of the values are set appropriately, click **OK**.
 - 11 Click **Save As**. Enter the method name and save to an appropriate location. The default file path is located at:

C:\Users\Public\Documents\Agilent\MicroLab\Methods.

NOTE

In 21 CFR part 11, you will be prompted to save the method in a database.

-
- 12 The method is now available for use with MicroLab PC. Ensure that the method is activated in order to use the method.

MicroLab quantitative model transfer from MicroLab Expert to MicroLab PC

To utilize model files from MicroLab Expert in MicroLab PC:

NOTE

For 21 CFR part 11 environment, the model needs to be imported to the database using MicroLab Quant before including in a method. Refer to Import Models on Page 3748 for detailed information.

MicroLab PC

- 1 From MicroLab PC or MicroLab Lite, click the **Method** button.
- 2 In the Method dialog box, click the **New** button.
- 3 On the method **Type** page, choose **Components** from the Method Type drop-down list.
- 4 Click the **Components** page.
- 5 On the Component page, click the **Add** button.
- 6 In the Add Components dialog box, specify a Name for the component.
- 7 Choose **Quant Model** as the Calculation Type. An Open file dialog box will appear.
- 8 Navigate to where the model file is located. Change the file type field to filter the file type. The following file types are accepted:
 - Agilent Models (*.mqm)
 - Thermo Models (*.txt)
 - Eigen Vector Models (*.xml)
 - Agilent MicroLab Expert Quant Models (*.a2q)

NOTE

The use of Agilent MicroLab Expert Quant Models (*.a2q) files requires a separate registration code, provided as part of a workflow product bundle, such as the "Measurement Bundle" (G8188AA). Otherwise, an error dialog box will appear.

- 9 Choose the model file and click **Open**. The model is now included in the method.
- 10 Enter the other options available in the Add Component dialog box. Click **OK**.
- 11 Click **Save As**. Enter the appropriate method name and save to C:\Users\Public\Documents\Agilent\MicroLab\Methods.
 - In 21 CFR part 11, you will be prompted to save the method in a database.
- 12 The method is now available for use with MicroLab PC. Ensure that the method is activated in order to use the method.

Using Pre-Sample Alignment Check

The Pre-Sample Alignment Check produces a visual indication of the signal strength from a measured sample in a preview screen. This allows you to determine if the sample is at the FTIR instrument's interface focus and flat against the sample, or that the instrument is aligned to the sample for maximum signal.

This procedure details creation of a method that uses the pre-sample alignment check. In the method, a measurement to be made from the sample will be specified. Typically, this should be a peak height or area that corresponds to the sample of interest.

To check the sample alignment:

- 1 From MicroLab PC or MicroLab Lite, click the **Methods** button.
- 2 In the Method dialog box, click the **New** button.
- 3 On the method **Type** page, choose **Components** from the Method Type drop-down list.
- 4 Click the **Components** page.
- 5 On the Component page, click the **Add** button.
- 6 In the Add Components dialog box, specify a Name for the component.
- 7 Select a Calculation Type for the component.
Typically, either a Peak Area with Dual Baseline or a Peak Height with Dual Baseline will give the best indication of sample alignment.
- 8 Define the peak (area) to be measured.
 - For peak areas, Peak Start and Peak Stop define the edges of the peak.
 - For Baseline 1 and Baseline 2, baseline is established as the lowest point between the Start and Stop points.
- 9 Set a Scale Factor such that the measured points will be greater than 1.
For peak heights, a scale factor of 1000 ensures that most measurements are on-scale.
- 10 Click **OK**.
- 11 On the method **Type** page, select **Show Pre-Sample Alignment Check**. From the drop-down list, choose the component defined in Step 6.
- 12 It should also be noted that the **Sample Continuity Check** can be used to ensure that the system is aligned to the sample throughout the measurement.
- 13 Click **Save As** and save the method.
- 14 For use on the handheld PC, the method should be transferred to the MicroLab Mobile/Methods folder on the mobile device.
- 15 In MicroLab Mobile, the Pre-Sample Alignment Check will be displayed as a red/yellow/green bar graph on the Sample Alignment page. The sample should be rotated or aligned in order to reach the maximum value on the bar graph.

Transferring edited methods to MicroLab Mobile

After completing modifications to a method in MicroLab PC or MicroLab Lite, the files should be transferred to the embedded or handheld PC for use. There are two ways to copy files; by using My Computer, or by transferring them automatically via MicroLab Lite.

Using MicroLab Lite Synchronize

To transfer methods to MicroLab Mobile using MicroLab Lite Synchronize:

- 1 Connect the handheld or embedded PC to the computer containing MicroLab Lite.
 - For 4300 Handheld FTIR, exit the MicroLab Mobile software on the device to enter 'Pass Through' mode, and connect to the computer using the USB connection. To exit MicroLab Mobile, select **Logoff** on the Home screen, click **Exit** and click **OK** when the Exit Confirmation dialog box appears.
- 2 Open MicroLab Lite on the computer.
- 3 Click **Advanced Features**.
- 4 Click **Synchronize**.
- 5 If no connection is listed, click **New**.
- 6 In the dialog box, select **Get Connected Device Name**; the serial number of the connected PDA or 4300 Handheld FTIR instrument will be entered in the dialog box automatically.
- 7 For standard configurations, select what options are to be synchronized. Reports, Results and Methods can be synchronized. In addition, reports can be automatically printed by specifying the desired printer.
 - For 21 CFR part 11 enabled systems, click **Browse** and then navigate to the Public Mobile Methods or Results folder.
 - To upload method files to MicroLab Mobile with 21 CFR part 11 enabled, the files must be located in the Public Mobile Methods folder. All method files in that folder are uploaded.
- 8 Once the device to be synchronized has been selected, click **OK**.
- 9 To transfer files, highlight the desired handheld PC from the list and click **Synchronize** or **Sync** and then click **Yes**.

Copying via My Computer

NOTE

For 21 CFR part 11 environments, non-CFR methods are visible in the mobile environment when copying via 'My Computer', but cannot be activated.

To transfer methods to MicroLab Mobile using My Computer:

- 1 Connect the handheld or embedded PC to the computer containing MicroLab PC.

NOTE

This procedure will not work on the 4300 Handheld FTIR. Use the **Synchronize** feature as specified on Page 40.

- 2 From the computer, open **My Computer** and browse to C:\Users\Public\Documents\Agilent\MicroLab\Methods.
- 3 Select the desired methods and choose **Edit > Copy**.
- 4 From the My Computer heading, select the **Mobile Device** drive.
- 5 Browse to the folder Program Files\MicroLab Mobile\Methods\.
- 6 Click **Edit > Paste**.
- 7 Return to the C:\ drive on the computer and browse to C:\Users\Public\Documents\Agilent\MicroLab\Models.
- 8 Copy the entire contents of the Models folder.
- 9 From the My Computer heading, select the **Mobile Device** drive.
- 10 Browse to the folder Program Files\MicroLab Mobile\Models and click **Edit > Paste**.
- 11 Click **Yes to All** if an overwrite warning appears.

Moving files in a 21 CFR part 11 enabled environment

This procedure can be used for method or results files.

To move files from one folder to another:

- 1 Logged on user must have 'Cut/paste method/results' privilege.
- 2 In MicroLab Lite or MicroLab PC, select the desired files, right-click and then select 'Cut'.
- 3 Navigate to the appropriate folder and then 'Paste' the files.

NOTE

Files cannot be copied to different folders.

System Check

To perform a System Check:

- 1 Click on **Advanced Features** on the Home screen.
- 2 Select **System Check**. There are four tests that can be performed, refer to instrument operation manual for more information on each test.
- 3 Select the test(s) to perform.
 - The Number of Tests, Number of user, or Number of Runs parameters can be adjusted if required.
 - Multiple tests can be selected to run together.
- 4 Click **Next** to start the test.
- 5 Follow the on-screen instructions. Click **Next** when you have completed the step.
- 6 Repeat the step above until the test(s) is complete.

4

MicroLab Quant

Home screen	43
Logoff	44
Lock	44
Start New Model	44
Import Models	48
21 CFR Part 11 Features	49

Home screen

When MicroLab PC v 5.1 and higher is installed, the MicroLab Quant Module will also install. The module is designed to allow the user to create methods and models that are to be used in the MicroLab Component methods module of MicroLab PC.

MicroLab Quant uses the same security settings and user administration tools that are applied in MicroLab PC. To log in, the user enters their username and password as if they are entering MicroLab PC. For 21 CFR part 11 environments, the group and project must also be entered.

The following options are available:

- Start New Model
- Previous Project/Model
- Evaluate Model
- Import Models (only available with 21 CFR part 11)

Data for the new project/model should be collected prior to using MicroLab Quant. This should be done in MicroLab PC. All data should have been collected using the same data collect parameters.

Logoff

The Logoff screen enables different users to log on and off the system. The Exit button closes the MicroLab PC software.

Lock

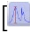


This is available in 21 CFR part 11 environments only. Use to Lock the software to control access while unattended. See the MicroLab 21 CFR part 11 section on Page 55 for more information.

Start New Model

To generate a new Model

- 1 Select the **Start New Model**. The software will auto-generate a name for the new project, however, the user has the opportunity to create and enter a name as well.
- 2 The data selection menu appears and allows the user to select the folder where the data is currently stored. The data is also then grouped by the method with which it was acquired.
 - a Select the data required to be used for the model generation. This can be done by clicking on the data. The user can use the **CTRL** and **Shift** keys to highlight multiple files, similar to file selection in a windows environment.
 - b Once the files have been selected, click on the **[Next>>]** button at the bottom of the screen to proceed.
- 3 For each standard enter the concentration in the concentration column.

- 4 Select the type of algorithm to apply to the data from the [Quant Algorithm] drop down menu and then click [Next>>]. The algorithm selection consists of the following options:
 - a **Simple Beer's Law:** Typically characterized as a linear equation of a single component. The component is defined by a series of known concentrations and the change in a specific spectral characteristic that is shown in Absorbance units. These changes can be peak heights, areas or ratios. A linear equation is then determined in the form of $[y = mx+b]$ from the Beer's Law construct of $A=ebc$. This is what is then used to determine unknown concentrations versus the known calibration equation.
 - b **Classical Least Squares:** Used when multiple components are present within a mixture. This analysis type is also based on Beer's Law where multiple frequencies are chosen to capture all of the changes happening to all components. Each of these is used in combination to determine the best correlation of predicted versus actual concentration for the calibration model.
 - 1 Multiple frequencies are defined and unlimited. Known concentrations of each constituent should be defined.
 - 2 CLS is not useful for mixtures that have matrix effects on components that interact with one another. It can also be susceptible to baseline effects.
 - 3 CLS is most effective for identifying one component in a mixture.
 - c **Inverse Least Squares (Also known as Inverse Beer's Law, or Multiple Linear Regression):** Used in multi-component mixtures where matrix effects are present. This analysis type is based on Beer's Law. Multiple frequencies are used to define the calibration of $C= P*A+e_c$, an inverse of Beer's Law.
 - 1 Best used as a Multivariate model where only knowledge of the constituent of interest is required. Suited to complex types of analysis.
 - 2 The number of frequencies used in the calibration cannot be greater than the number of known standards used in the calibration. These frequencies should correspond to changes in the constituent of interest.
 - 3 ILS generally produces the most accurate calibration if a sufficient number of calibration spectra are available.
- 5 Once the quant algorithm has been selected, peak definition is required. The software allows for the selection of peak heights, areas, and ratios.

- a **Peak Height Definition:** Drag and drop the Peak Height Icon on the spectra displayed in the data window . The arrows on the Spectral Display allow the user to interactively change the baseline and peak position.
 - 1 **Red Arrows** pointing in the upwards direction define baseline positioning – start and end points.
 - 2 **Blue arrows** pointing in the downwards direction indicate the peak position.
- b **Peak Area Definition:** Drag and drop the Peak Area Icon on the spectra displayed in the data window . The arrows on the Spectral Display allow the user to interactively change the baseline and peak position.
 - 1 **Red Arrows** pointing in the upwards direction define baseline positioning – start and end points.
 - 2 **Blue arrows** pointing in the downwards direction indicate the peak positioning – start and end points.
- c **Peak Ratio Definition:** the software allows for a peak or area ratio to be used for calibration purposes. It requires that a minimum of two peaks be defined, either by area or height. Once the peaks of interest are defined, click on the Peak ratio Icon below the data window . The dialogue will then prompt the user to define the numerator and denominator for the ratio equation.
- d **Scaling:** The user is allowed to click and zoom on the displayed spectral data interactively. To “unzoom”, right-click in the spectral display window and click on [Full Scale]
- e **Data Table:** The data shown in the table is representative of the peak definitions the user has added via the interactive spectral display window. The user may choose to change these values directly in the table if specific values are necessary.
 - 1 **Include in Model Option:** Allows the user to decide which operations are included in the model they are developing. This is based on the full data set.
 - 2 **Delete:** Allows the user to delete peak definition from the model permanently.
- f **Standards Table:** Allows the user to interactive select which specific standards to use in the calibration algorithm. Individual Spectral data can be removed from the plot or model by de-selecting the corresponding check box. As well, an individual Spectrum can be highlighted in the display window by highlighting it in the standards window.

- g **Model Plot Window:** The default of the model plot window is to display the Predicted vs Actual plot. The user can switch to the Defined Peak vs Concentration Plots in one of two ways:
 - 1 Right-click in the model plot window and select the desired plot.
 - 2 Click the **Select Model Plot** button on the bottom of the analysis screen.
- h **Model Evaluation:** By clicking on the Model Evaluation button, the software presents the user with two functions. These functions are typically used to determine outliers and robustness of the calibration set.
 - 1 **Cross Validation:** The software runs through the calibration eliminating each standard and then determining what value would be returned if running that standard as an unknown.
 - 2 **Independent Set:** Allows the user to **[Add Files...]** of check standards that have been run independently of the calibration and predict the values on these samples. The concentrations of each sample are entered into the table and then the **[Predict]** button is clicked.
 - a Total Standard Error, R-Squared for Actual V Predicted are shown at the bottom of the screen. The Actual V Predicted graph is also displayed on the screen.
 - b The user can **Export** the values to a CSV file format of in the location of their choice.
 - c The user now has the option of saving **[Save]** the model and returning to the previous data analysis screen **[Back]**.
- i **Finalize Model:** If the user is satisfied with the calibration model, the **[Finalize Model]** button is chosen. This then allows the user to save the Project (*.mpq) which includes the standard and model. The user can also choose at this time to save the data to a MicroLab method. This will include the component that the user just defined in the associated model with all of the calibration parameters.
 - 1 **Model Files:** If multiple components need to be defined, then this will be done in individual models/projects. Each component is defined in an individual model or *.mqm file at the same time the project file is saved.
 - 2 **Save Method:** Saves the files to an *.a2m file extension with the component of interest. The method will have the same data collect parameters as the calibration files which were used to create the model. If multiple components are necessary in a methods file, then they must be added to the method manually through MicroLab Lite or PC. See Section on Multivariate method transfer under MicroLab PC.

The models are added in the same way as the GRAMS models, however, they are defined as the *.mqm files as noted above.

- 3 **Print:** Select to create a PDF including the standards and model information. The file is saved in the C:\Users\Public\Documents\Agilent\MicroLab\Results folder.
- 6 **Previous Project/Model:** Allows the user to select a previous started project and edit parameters. This is done similar to the Start New Model section above. However, some amount of work has already been done. Typically, standards may have already been added and some peak definition may have been added. The user can now go through the same steps, to define, evaluate and finalize their methods.
- 7 **Evaluate Model** This allows the user to select a method to evaluate. The **Independent Set Evaluation** screen is shown allowing the user to proceed with loading known standards and predicting the concentration as was done previously in the model evaluation section in the New Model setup.

Import Models

To import model files using MicroLab Quant:

NOTE

This functionality is only available in 21 CFR part 11 environments.

MicroLab Quant is the only application that has the functionality to import a model to a database for model utilization in a method using MicroLab PC.

Refer to Page 37 for model transfer in a non-21 CFR part 11 environment.

- 1 Log on to MicroLab Quant.
- 2 Select **Import models**.
- 3 Navigate to where the model is saved and select the model of interest. Filter the model type as required.
The following file types are accepted:
 - Agilent Models (*.mqm)
 - Thermo Models (*.txt)
 - Eigen Vector Models (*.xml)
 - Agilent MicroLab Expert Quant Models (*.a2q)

NOTE

The use of Agilent MicroLab Expert Quant Models (*.a2q) files requires a separate registration code, provided as part of a workflow product bundle, such as the "Measurement Bundle" (G8188AA). Otherwise, an error dialog box will appear.

- 4 Click **Open**. The 'Select database/folder' window will appear.
- 5 Select a database folder to import the model file to and click **OK**.
- 6 Once the model file is successfully imported into the database, click **OK**.
- 7 Follow the steps described on Page 37 to include the model in a method using MicroLab PC.

21 CFR Part 11 Features

See the MicroLab 21 CFR part 11 section on Page 55 for more information on these features.

21 CFR part 11

Displays a list of actions performed while creating or editing a model.

E-Sign

Click E-sign to apply an electronic signature and add comments to the model.

This page is intentionally left blank.

5

MicroLab OQ

Operational Qualification (OQ)	51
Perform the OQ	52
OQ Report	53

MicroLab OQ software provides diagnostic values and performance validation tests to ensure that the system is performing as intended. Refer to the appropriate instrument operation manual for more information on the Diagnostics values and performance validation tests for each instrument.

Operational Qualification (OQ)

Diagnostics Verification of Operational System

The Diagnostic screen displays the following information about the instrument:

- Instrument Status: Energy, Battery, Source, Laser and Current Gain.
- Temperatures of: Detector, CPU, IR board, Power and Block
- Version Information

NOTE

Diagnostic can also be viewed from both MicroLab PC and MicroLab Mobile through the **Advanced Features** screen.

The results are represented in colors.

- Green: The result is within the optimal value range. The instrument is performing properly.
- Yellow: The result is within the marginal range. The instrument is functioning but at a lower performance level.
- Red: The result falls within the critical range. The instrument is not working correctly.

Performance Validation

The following tests are available:

- Signal to Noise (Performance) Test.
- Stability Test.
- Laser Frequency Calibration Check (Frequency accuracy and repeatability).
- Spectral Resolution Check.

NOTE

These are the same tests used for **System Check** in both MicroLab PC and MicroLab Mobile through the **Advanced Features** screen.

Perform the OQ

To start the operational qualification:

- 1 Click on **Next** to initiate testing.
- 2 Ensure the right instrument is selected.
- 3 Select all the appropriate accessories. Click **Make Primary** to define an accessory as primary accessory. This will allow the instrument to perform tests with the different accessories selected.
The primary accessory must be an accessory that can run all the performance validation tests. This is to ensure that the instrument is performing correctly.
- 4 Click **OK** to begin the process.
- 5 The Diagnostic page will appear. If any of the diagnostic results FAIL, you will not be able to proceed with the performance tests.
 - If the Energy field under Instrument Status appear as FAIL, click on **Gain Adjust** button and adjust the gain value such that the signal is within the optimal (green) range. The Status indicator will also appear as green when the signal is within the optimal range.
 - Click **Set Instrument Default Gain** to save that gain value as instrument default.
 - Click **Back** to return to Diagnostic page.
- 6 Click **Next**.
- 7 Select the performance tests to run. Click **Next**.
- 8 Follow the on-screen instructions. Click **Next** when ready.
- 9 Repeat the step above until the OQ is complete.

OQ Report

Results Summary

When the operational qualification is complete, the Results Summary screen appears displaying the results of each test.

An OQ report is also generated in PDF form, displaying:

System Information such as the Workstation ID and Software Version.

Reporting Information such as the user information and report filenames.

Accessories information such as any accessory connected to the instrument.

The results from MicroLab OQ are located at the following file path:
C:\Users\Public\Documents\Agilent\MicroLab\IQOQ.

This page is intentionally left blank.

6 MicroLab with 21 CFR Part 11

SCM	51
SDA	52
21 CFR Part 11 Software Components in MicroLab	53

The 21 CFR part 11 component in MicroLab Pharma Software consists of two programs:

- Spectroscopy Configuration Manager (SCM)
- Spectroscopy Database Administration (SDA)

Once measurements have occurred, you cannot delete the results.

Once CFR is installed, you cannot turn off CFR functionality. Uninstalling the MicroLab software and SCM and then reinstalling only MicroLab software retains the CFR rules. This preserves the CFR environment integrity.

For installation instructions, see the 'MicroLab Software Installation Instructions for 21 CFR Part 11 Environments' provided with the software.

NOTE

The optional MicroLab Expert software cannot be used in a 21CFR Part 11 Environment. For more information, please see the MicroLab Expert Software Installation Instructions, the MicroLab Pharma Installation Instructions, and the Agilent MicroLab Expert 1.1.0.1 Software Release Notes.

SCM

The Spectroscopy Configuration Manager (SCM) is a software interface between system administration personnel and the Server and Acquisition Server part of Agilent spectroscopy software applications. SCM provides the means to create, configure and maintain data regarding system security, user management and data paths.

To provide the security required for compliance with the 21 CFR Part 11 rule, Agilent uses SCM for security and permission rights. These security functions provide:

MicroLab with 21 CFR Part 11

- Access controls and authority checks via the use of user identification codes and passwords.
- Electronic record security via the use of databases.
- Time and date stamped audit trails.

The use of user identification codes and passwords enables control over who can log on to the system and who can perform particular functions within the Agilent application software. It also provides the mechanism to allow electronic signing of electronic records. The use of databases coupled with SCM, prevents all unauthorized users from changing or deleting files. The SCM event logs augment the audit trails resident in the application software. The SCM administrator must set up the required users. It is important that a number of simple requirements are followed when this is done to ensure that compliance with the 21 CFR Part 11 rule is maintained.

For additional information about configuring SCM see the SCM Help. To access the SCM Help, with the SCM application open, press F1 on your keyboard or navigate to C:>Program Files (x86) > Varian > 21 CFR 11 > Configuration manager > Server > Configuration Manager Database Help.

SDA

The Spectroscopy Database Administrator (SDA) has been designed for system administrators to set up and maintain the databases that are used by the Agilent application software to store data.

You can use SDA together with the Agilent Spectroscopy Configuration Manager (SCM), the application software, and your own Standard Operating Practices (SOPs) to form a 21 CFR Part 11 capable environment for controlling your Agilent instruments.

SDA allows the data collected by Agilent instruments to be stored locally (on the same PC as the Agilent application software), or remotely in a Client/Server arrangement.

Configuration must be performed by the system administrator, or a person with administration rights to run SDA.

For additional information about configuring SDA see the SDA Help. To access the SDA Help, with the SDA application open, press F1 on your keyboard or click Start > All Programs > Agilent > Database Utilities > SDA Help.

21 CFR Part 11 Software Components in MicroLab

With the 21 CFR part 11 software installed, additional buttons will be available.

Lock

This dialog allows the user to lock the MicroLab software when using the 21 CFR Part 11 software package. It is accessed from the Home screen.

When locked, the Unlock MicroLab PC dialog box appears and no actions can be taken until a validated user logs on and unlocks the software. Users other than the one that 'Locked' the MicroLab PC/Lite/Quant/OQ originally can only unlock the software when they are on the Home page. Only the user who is originally logged on to the software can unlock the software from all pages. This ensures privileges are applied correctly, audit trail information is correct in MicroLab and Configuration Manager and results file are saved correctly.

User Identification — Type your user identification.

Group — Select your group from the drop-down list.

Project — Select your project from the drop-down list.

Password — Enter your password.

NOTE

When MicroLab Mobile 21 CFR part 11 is used, passwords must be alpha numeric only. Do not use special characters such as \$, @, and so on.

OK — Click OK to log on and exit the dialog box. The software is now unlocked.

Cancel — Click Cancel to exit the dialog box without logging on. The software stays locked.

E-sign

Click E-sign to apply an electronic signature. Any User can "Sign" the method or results. To perform Approval – 1 and Approval – 2 the User must be given appropriate permission in Spectroscopy Configuration Manager. You do not need to login to the MicroLab software to approve, however when the Signature dialog appears the User will need to enter their credentials to perform the Approval – 1 or Approval – 2. The original User who was logged in before the Approval is performed will remain logged in. If the account of the user logged in to the MicroLab software is deactivated or locked, when cancelling out of the e-Signature dialog the Lock dialog will appear. The original user account must be unlocked by the Configuration Manager Administrator before the MicroLab software can be unlocked.

User Identification — This field displays the name of the current user. The operator/approver must enter their user identification in this field prior to applying an electronic signature.

Group — The group will automatically be populated once the user identification field is entered. If the User is linked to more than one group, choose the appropriate group.

Project — The project will automatically be populated once the user identification field is entered. If the User is linked to more than one project, choose the appropriate project.

Password — The operator/approver must enter their password in this field if they are to apply an electronic signature.

Comment — In this field, type information about the action that is being signed off, or the meaning of the signature. It is compulsory to enter a comment — if it is left blank, when the 'Sign', 'Approval-1' or 'Approval-2' button is clicked, a message is displayed stating that this is a required field.

Approval-1 — Click to apply an electronic signature at the Approval-1 level. A user who ran the method cannot also approve the data, a message stating this is displayed.

Approval-2 — Click to apply an electronic signature at the Approval-2 level. A user who ran the application and created the data cannot also approve the data, a message stating this is displayed.

The method or results will become locked once Approval – 2 has been performed. This method or results can be opened and viewed, but no further modifications can be performed. A new method can be created from this locked method.

MicroLab method and result files cannot be locked unless Approval-2 is performed. A company SOP may be required to ensure no further modifications are made to the file once the document has been signed by the Operator and Approver-1. Any modification between performing the e-signature are detailed in the Audit Trail including the e-signature events.

Reason for Change

This dialog box will open as soon as a change is made to the method. The method is saved immediately after the 'Reason for change' dialog is completed.

This dialog box enables a user to enter a reason for any changes that have been made to a method.

The information entered here will be displayed in the MicroLab report, the datalog and the Audit log in SCM.

MicroLab with 21 CFR Part 11

The bottom part of the dialog box shows the log of the method including any changes that have been made.

21 CFR part 11

Click to access the Audit Trails, Collect Parameters and Analysis Parameters tabs.

Audit trail

The method and results audit trails are displayed, showing all recorded actions including:

- Method and results save location
- Method used for re-analysis
- Method parameter changes
- Reason for change
- Method run started
- Method run stopped
- Unexpected instrument failure, method run stopped
- Method or results authorized
- Residual Applied

For each entry above, a combination of the following information is also logged:

- SDAdministrator server/database/file name
- Local Date and Time
- GMT Date and Time
- Workstation name
- User: Group/Project/User ID
- Username
- User Description
- Instrument Serial Number
- Validated comment
- Software version number
- Firmware version number

This page is intentionally left blank.

7

Measuring Samples

Cleaning the sample interface	61
Collecting a background measurement	62
Collecting the sample measurement	62

The MicroLab PC and MicroLab Mobile software are designed to walk the user through sample measurement. The software displays images and instructions of the actions that are required by the user for sample measurement. Carefully following the instructions on the screen ensures consistent measurement results. For any sample measurement, the following steps are taken:

- Clean the sample interface.
- Collect a background.
- Place the sample to be measured.
- Collect the sample measurement.

Cleaning the sample interface

The first step in making a sample measurement is to ensure that the sample mounting interface is clean of any residue from previous samples or from general use and storage. For specific instructions on cleaning, refer to the appropriate instrument operation manual supplied with the system.

CAUTION

Do not break the spectrometer seal and attempt to clean interior surfaces. Breaking the seal will void the warranty.

Collecting a background measurement

Agilent recommend that the system is configured to collect a background before every sample.

Before you begin an analysis, the software will automatically collect a background spectrum when the method is configured as recommended. The background measurement (with no sample present) provides a baseline profile of the current system conditions and enables you to factor out any anomalies occurring in both the background and sample spectrum.

NOTE

Before collecting a background, ensure that the sample interface is clean. To clean the sample interface, a suitable solvent such as methanol, acetone or isopropyl alcohol should be used. See the instrument operation manual for more detailed information.

To collect a background measurement:

- 1 On the Home screen, ensure that the appropriate method is active, then click **START** to initialize background sample analysis.
- 2 Click **Next**. A brief check of the sample interface (the crystal) will occur. Following a successful test, the system gathers a 'background'. Background progress is indicated by a status bar.

NOTE

Only click HOME to go back to the main home screen if you wish to start your analysis over.

Collecting the sample measurement

To measure a sample:

- 1 To begin sample measurement, click the **Start** button on the Home screen.
- 2 As the software instructs, clean the sample interface for an ATR or Transmission measurement.
 - For a reflectance measurement on the Agilent 4100 ExoScan FTIR, the reflection standard should be placed on the sample interface.

NOTE

The sample surface should be cleaned with a soft tissue and an appropriate solvent such as methanol, ethanol or acetone.

Measuring Samples

- 3 Click the **Next** button. Clicking the Home button will stop the measurement and return you to the Home screen.
The Clean Crystal Check will be conducted if it has been selected in the method. This will check for absorbance over a stored reference. If any absorbances are found, the software will instruct you to clean the sample interface and start again.

NOTE

If the clean crystal check continually fails, the stored background scan may be corrupted. If this occurs, the clean background can be reset by clicking Advanced Features > Diagnostics then Reset Clean Check in the Diagnostics dialog box. This will clear the stored background.

- 4 Following the crystal check (if specified), the software will collect the background sample. Background samples are collected either at every scan or after a specified time interval, as specified in the method.
The software will instruct you to apply the sample to the sample interface. The picture displayed will match the configuration of the system. Once the sample is in place, click **Next**.
- 5 The software will display a graph showing the intensity (absorbance) of the sample measurement. This screen is used to ensure that the sample has been correctly placed at the sampling interface.
 - For oil applications using Agilent 4500t FTIR, the value should be maximized.
 - For Agilent 4100 ExoScan FTIR applications using reflectance, the value should be between 0.1 and 2 AU; ATR measurements should be between 0.05 and 1 AU.
- 6 Enter a file name in the Sample ID field; this will be the file name under which the sample data is saved. Enter further information about the sample in the Comment field.
- 7 Click the **Next** button to begin sample measurement. The software will co-add sample scans as specified in the method.
- 8 During sample measurement, the sample needs to remain at the focus of the sampling technology.
 - For the Agilent 4500t FTIR, the sample cell should not be adjusted during the measurement.
 - For the Agilent 4100 ExoScan FTIR, the instrument should not be moved from the sample surface during the measurement.

The software monitors the sample signal during measurement. If the signal falls below a preset threshold, the collection will stop. Once the sample focus is regained, the software will immediately start collecting data.

Measuring Samples

NOTE

The progress bar shows the advancement of the data collection. When the progress bar is complete, the prompt will change to Transferring Data. Once this occurs, the measurement is complete, and the sample can be removed from the instrument.

- 9 When the sample measurement is complete, the software will display the method results in the Results screen. The sample spectrum and the calculated method results will automatically be saved. The data can be returned to at any time from the Previous Results screen.

8 Reviewing Results

MicroLab Mobile	65
MicroLab PC/MicroLab Lite	68
MicroLab Report Creation	76

MicroLab Mobile

Results screen

For component methods, the Results screen shows the calculated component values. Component values are ordered relative to their critical limits; those values outside of the critical range are listed first followed by values outside of the marginal range. The components within the acceptable range are shown last in green.

- Green results show that the sample is within adjustable limits.
- Yellow results show that the sample is between marginal and critical limits.
- Red results show that the sample is above or below critical limits.

Home: This button returns the software to the Home screen.

Next: This button returns the software to the Sample Collection page for measurement of additional samples.

Handling data

The Menu button enables you to choose Data Handling. This button allows the user to input a Sample ID and comments if not previously entered. The system's auto-save feature will save the Comment field and generate a new file based on the sample ID if one is entered.

NOTE

The auto save feature will always save the current file with a sample ID and a time date stamp. This prevents the user from saving over a previous sample result.

Home: Returns the software to the Home screen.

Next: Takes the software back to the start sample screen to measure the next sample.

Reviewing Results

Re-Analyze: Enables you to perform the calculations of a different method on the currently viewed data. This is useful when it is not possible to recollect the sample data. Each re-analysis will generate a new data file.

NOTE

The Re-analyze feature should be used only with data collected at the same spectral resolution as the method chosen. Differences in spectral resolution can affect quantitative results.

Export: Enables you to export collected data to other analytical software packages. The exported file will be saved with the same file name as the sample, except the extension will be *.csv, *.asp or *.spc. It will be saved into the Results directory.

Peak Picking: Enables the user to define peaks to be marked on the spectrum being reviewed. This is done by right clicking on the spectrum and choosing Peak Pick from the menu. To mark peaks on the spectrum, draw a threshold line by clicking, dragging, and clicking again. This can be repeated multiple times to define several peaks on the spectrum. The peaks will print on any report generated and will keep with the data file. Once done, right click again and de-select Peak Pick from the menu.

Report templates incorporate a peak picking table. For the selected peaks, the peak values appear in the table in the order they were selected.

Importing spectra into GRAMS

To import data to SPC format:

- 1 Open GRAMS/AI on your computer and click **File > Import/Export**. Select the ASCII file converter. Then, click the **Import** button.
- 2 Browse the drives and directories to locate the file(s) you wish to import. When importing, remember that most file converters expect a particular input file name extension. For example, the ASCII converter looks for files with the *.ASP file name extension. (If needed, change Files of type to All Files (*.*)).

You may select multiple files by pressing the CONTROL key while clicking each file name.

Click **Open**. The File Import dialog box displays the name of the file to import. (If you are importing more than one file, the name of the first file will be displayed.)

- 3 Rename the file, if desired. To write the newly created file to a different directory, precede the file name with the complete directory path. Otherwise, it will be saved in the same folder as the ASP file. (You must have read/write access to the output directory.)
- 4 Choose an experiment key extension from the Output File Type list. Leave it set to the default **Spectra (*.spc)**.

Reviewing Results

- 5 Select an Output Rename option. Leave it as **Manual**.
- 6 Click **Auto-open** to automatically open the converted file in GRAMS/AI. (Auto-open will not open multiple files. Auto-open will apply to the last file converted.)
- 7 From the File Import dialog box, click **OK**.

As the file is converted, GRAMS Convert Application reads in the file to import and writes a new file to disk. Once the conversion process is complete, you can load the file into GRAMS/AI using the File > Open Trace command.

As the conversion proceeds, any messages or errors are displayed. If many files are being converted, you can switch back to GRAMS/AI or any other Windows program and the conversion continues. Note that the Convert program is a separate application named GRAMSC32.EXE and can be independently started from Windows from GRAMS/AI. The File > Import/Export command launches this application with a special command line switch, which causes it to automatically exit after the conversion.

Report: Clicking the Data Handling button enables you to save a report. Reports are *.PDF files, which detail the component results for component methods or the library search results for Qualitative Search methods. The reports are saved in the Results directory and can be synchronized using MicroLab Lite.

Previous results

MicroLab Mobile's Previous Results enables reviewing of data after collection has occurred. Previous results are available under the Menu icon on the Home screen. A list of previously collected samples is displayed on the Previous Results screen. In order to move through the list, click the list and drag to scroll.

Home: Returns the software to the Home screen.

View: Opens the data file for viewing. The data will be presented in an identical way to the Results screen shown in the Reviewing Results section on Page 65.

Report: From the Menu button, the Report button will generate a PDF report as specified in the Reports page section on Page 31.

MicroLab PC/MicroLab Lite

MicroLab PC/MicroLab Lite enable further data analysis than is available within MicroLab Mobile. Due to the screen size, spectra are not currently displayed in the MicroLab Mobile software. MicroLab PC/MicroLab Lite enable viewing of the spectra and review of the spectral regions that were used for the component calculations. Once the data has been transferred to the computer (refer Transferring edited methods to MicroLab Mobile on Page 40; transferring results is analogous to transferring methods), it can be reviewed using the Previous Results feature of MicroLab PC or MicroLab Lite. From the MicroLab PC Home screen, click the **Previous Results** button and a screen will appear listing all the sample file names.

Home: Returns the software to the Home screen.

Import: Enables you to make additions to the Results screen.

Report: Generates a report for the sample if report template(s) is assigned in the Reports page of the method. Refer to [Page 76](#) to assign a report template to a method.

View: Returns the software to the Sample Results screen. The Sample Results are always reviewable with the MicroLab software.

Overlay: The Overlay button appears when more than one spectral file is selected. It allows the user to view up to 5 sample spectra in overlaid or stacked format for comparison. The files must have the same abscissa type in order to be viewed together.

Export: Enables you to export collected data to other analytical software packages. The exported file will be saved with the same file name as the sample, except the extension will be *.asp or *.spc. It will be saved into the Results directory.

Diag Info: Displays diagnostic information for the spectrometer connected to the MicroLab software.

NOTE

The software from the previous results section will operate as the results section operates. The screens are identical. These features enable operators to review data.

Reviewing Results

Results screen

The results screen that is displayed once the run is complete will vary depending on the chosen method type.

Components Method Type

[illegible]

Figure 1. Components method result screen.

The components method search results are color-coded for clarity. Results outside of the specified range are highlighted red and are moved to the top of the list.

- Green results show that the sample is within the adjustable limits.
- Yellow results show that the sample is close to acceptable limits.
- Red results show that sample is outside acceptable limits.

The Results table displays the sample Name, Value, Low and High thresholds.

Data Collect Only Method Type

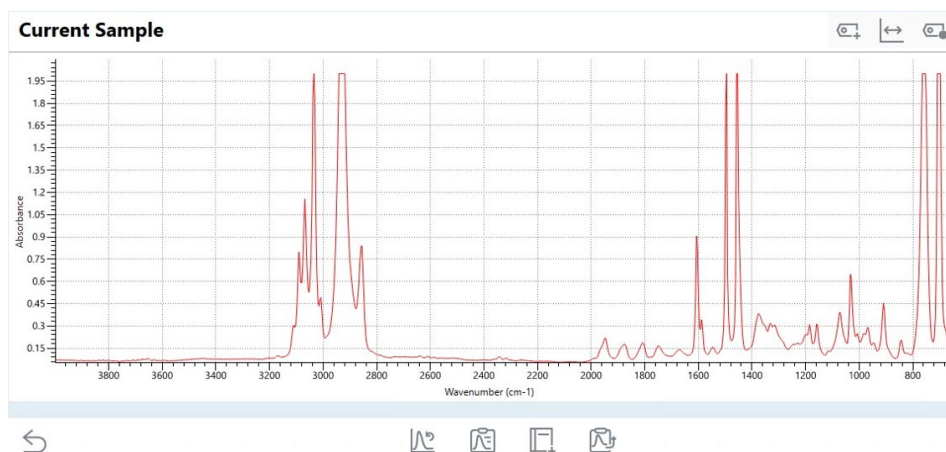




Figure 2. Data Collect Only method type results screen.

Reviewing Results

The default Data Collect Only method type window showcases the MicroLab results interface (Figure 2). The toolbar above the result window contains various icons that may be used to manipulate the data display.

- Select the  icon to return to the home screen.
- Select the  icon to add and delete Data Labels from the results spectra.

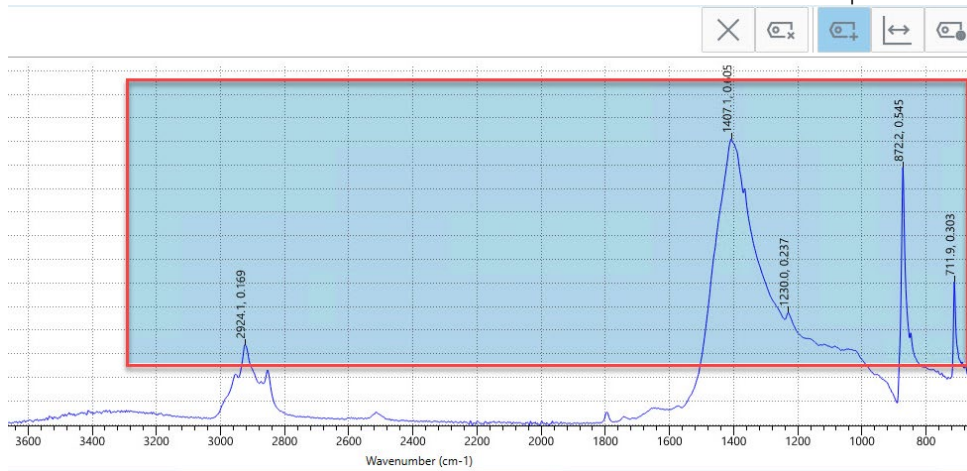







Figure 3. Peak Picking data label functionality.

- **Peak Picking:** For convenience, Data Labels may be simultaneously added to multiple peaks of the spectra by selecting the **Data Labels**  icon and dragging the selection to include any relevant peaks. This may also be activated via the keyboard shortcut **Ctrl + F**.
- Select the  icon to change the spectra display from the default view to the Compressed View. This function may be useful when greater clarity is required from a particular region of the displayed spectra.






When in the Compressed View:

- The **Position** value defines the position of the border between the compressed and normal wavenumber (x-axis).
- The **Factor** value defines the compression factor applied to the region left of the chosen wavenumber (x-axis) position.
- Select the  icon to edit the visibility and format of the applied data labels.

The toolbar below the data display contains various icons that may be used to process the data and navigate through the software.

- Select the  icon to reanalyze the data (Only available for previous results).
- Select the  icon to generate a report.

Reviewing Results

- Select the  icon to add the current result to the library.
- Select the  icon to E-sign the current report. (21 CFR part 11 mode only).
- Select the  icon to export the result file.
- Select the  icon to start the workflow for the next sample (Only available as part of a measurement workflow).
- Select the  icon to display the sample ID and any comments attached prior to collection.

'Classic View' Data Collect Only Graphics Window

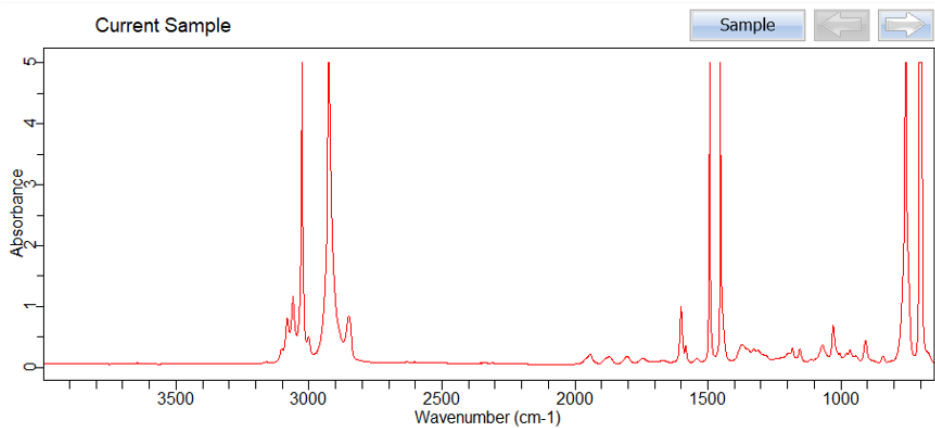


Figure 4. Data Collect Only Classic View method type results screen.

The Classic View of the Data Collect Graphics Window offers an alternative method of viewing results when the “Data Collect Only” method type is selected. To enable/disable this feature, select the “Enable Classic View” checkbox in the method editing window.

Qualitative Search Method Type

Results:

Warning	Rank	Quality	Library	CAS#	Name
	1	0.18933	TIC TAC (523)		Table Salt
	2	0.26196	Agilent Elastomer Oring and Seal Handheld ATR Library (280)		Natural-Rubber - Blair Run#5
	3	0.30146	Agilent Elastomer Oring and Seal Handheld ATR Library (139)		Gasket-SBR 10053333 Run#4 edge
	4	0.36079	Agilent Elastomer Oring and Seal Handheld ATR Library (278)		Natural-Rubber - Blair Run#3
	5	0.38287	Agilent Elastomer Oring and Seal Handheld ATR Library (279)		Natural-Rubber - Blair Run#4
	6	0.38513	Agilent Elastomer Oring and Seal Handheld ATR Library (138)		Gasket-SBR 10053333 Run#3 edge
	7	0.42246	Agilent Elastomer Oring and Seal Handheld ATR Library (258)		Natural-PureGum-Rubber - US Flex Run#2
	8	0.44293	Agilent Elastomer Oring and Seal Handheld ATR Library (347)		Neoprene U S Flexible Run#3

Rank 10

Figure 5. Qualitative Search method results screen.

Reviewing Results

The qualitative search results can be color-coded for clarity.

- Green results indicate library hits that are below the quality marginal threshold.
- Orange results indicate library hits that fall between the quality marginal and quality critical thresholds.
- Red results indicate library hits that are above the quality critical threshold.

For more information on setting the color-coding thresholds, refer to the Methods section on [Page 21](#).

Viewing spectra regions

A unique feature of the MicroLab software enables you to compare samples at specific regions. Simply double-click the individual parameters. The reference spectra will appear alongside the sample spectra. Moving between categories is accomplished by using the left and right arrows in the top right corner. You may decide to compare sample and reference spectra in an Overlay or Stacked view.

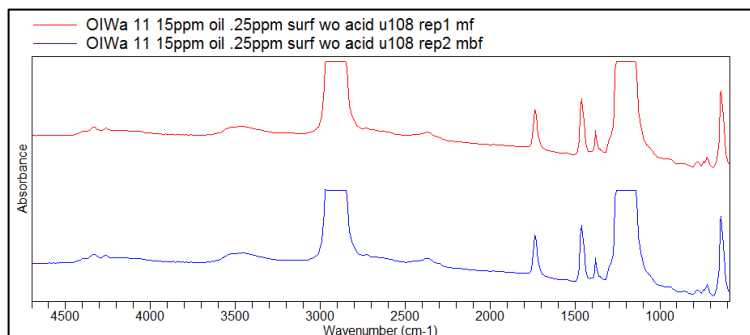
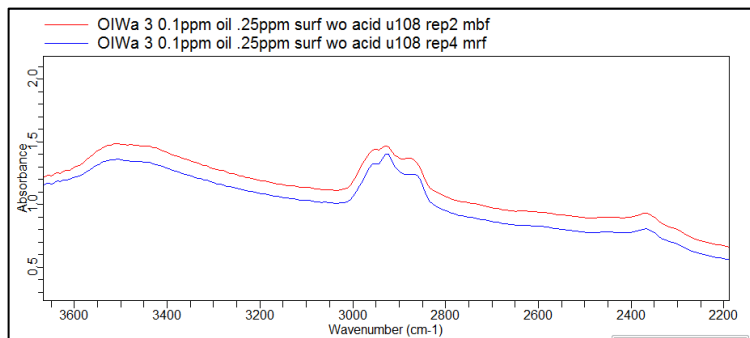


Figure 6. Example of Stacked option



Reviewing Results

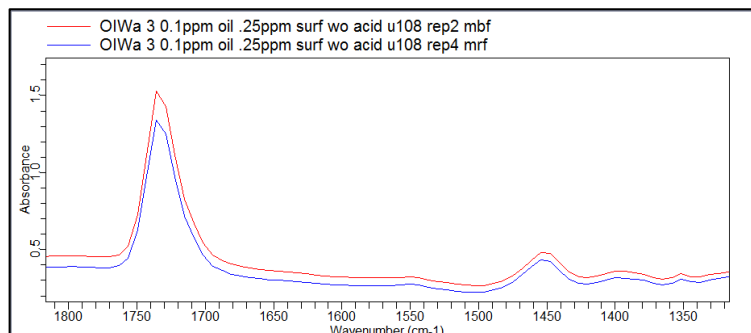


Figure 7. Example of Overlay option

NOTE

To change between categories, right-click and scroll down to either option. The screen will reflect the view you indicate.

Details

Click **Details** to view the spectrum of the sample. The MicroLab software will display the sample spectra against the reference spectra.

When Qualitative search is selected, the table below the spectrum lists the library hits ranked by quality.

In addition, the following tabs are displayed:

- **TextFind:** Allows a specific library entry to be searched for via name or CAS number. Once selected, the chosen library entry spectra will be compared against the sample spectra in the Details tab. This entry will also appear ranked at the top of the library quality hit list.
- **Residual:** Displays the current analyzed sample as a residual against a selected library hit.

NOTE

You can zoom in on any portion of the spectra. Using the mouse or touch pad, click on the graph and highlight the desired portion. The screen will automatically change to the zoomed in portion.

To return to the full spectrum, right-click on one graph and choose Undo Zoom.

Params

Click **Params** to view the following tabs:

- **Collect Parameters:** Shows a summary of method parameters.
- **Analysis Parameters:** Shows a summary of analysis on collected data.

Reviewing Results

Data handling

Click **Data Handling** to access the following features.

Report: Generates a report for the sample if report template(s) is assigned in the Reports page of the method. The report outlines the preset parameters and shows the results in relevant units compared to the reference oil or ASTM (American Society for Testing and Materials) method where appropriate. Refer to Page 76 to assign a report template to a method.

Add To a Library: Enables you to add the sample spectra to an appropriate library. Click 'Browse' to access the library. A list will appear that shows the libraries available to you.

Add To Library will complete the process. Adding new spectra to the user's library enables the software to determine if the subsequent samples are similar.

Export: Enables you to export collected data to other analytical software packages.

Re-Analyze: Enables you to perform the calculations of a different method on the currently viewed data. This is useful when it is not possible to recollect the sample data.

NOTE

The Re-analyze feature should be used only with data collected at the same spectral resolution as the method chosen. Differences in spectral resolution can affect quantitative results.

E-Sign

This is available in 21 CFR part 11 environments only. Click E-sign to apply an electronic signature. See Page 57 for more information.

21 CFR part 11

Displays a list of actions performed while running or editing a method or results. See Page 59 for more information.

Importing spectra into GRAMS

To import data to SPC format:

- 1 Open GRAMS/AI on your computer and click **File > Import/Export**. Select the ASCII file converter. Then, click the **Import** button.
- 2 Browse the drives and directories to locate the file(s) you wish to import. When importing, remember that most file converters expect a particular input file name extension. For example, the ASCII converter looks for files with the *.ASP extension. (If needed, change Files of type to All Files (*.*)).

Reviewing Results

You may select multiple files by pressing the CONTROL key while clicking each file name.

Click **Open**. The File Import dialog box displays the name of the file to import (If you are importing more than one file, the name of the first file will be displayed.)

- 3 Rename the file, if desired. To write the newly created file to a different directory, precede the file name with the complete directory path. Otherwise, it will be saved in the same folder as the ASP file. (You must have read/write access to the output directory.)
- 4 Choose an experiment key extension from the Output File Type list. Leave it set to the default **Spectra (*.spc)**.
- 5 Select an Output Rename option. Leave it at **Manual**.
- 6 Click **Auto-open** to automatically open the converted file in GRAMS/AI. (Auto-open will not open multiple files. Auto-open will apply to the last file converted.)
- 7 From the File Import dialog box, click **OK**.

As the file is converted, GRAMS Convert application reads in the file to import and writes a new file to disk. Once the conversion process is complete, you can load the file into GRAMS/AI using the File > Open Trace command.

As the conversion proceeds, any messages or errors are displayed. If many files are being converted, you can switch back to GRAMS/AI or any other Windows program and the conversion continues. Note that the Convert program is actually a separate application named GRAMSC32.EXE and can be independently started from Windows from GRAMS/AI. The File > Import/Export command launches this application with a special command line switch, which causes it to automatically exit after the conversion.

Done: Returns to a screen that prompts you to clean the sampling area and sampling device. This prepares the spectrometer for the next sample. 'Done' enables you to run multiple samples without having to return to the Home screen.

NOTE

This option does not allow you to change unit information. If you are running samples from different machines, you must return to the Home screen.

NOTE

If you would like to stop the analysis, click the HOME button.

MicroLab Report Creation

Assigning a Report Template to a Method

MicroLab allows the user to choose from a list of report templates and associate them with their specific methods. Each of the report templates are designated when created to a method type or specific function in the software.

To assign a report template to a method:

- 1 Select **Methods** from the **Home** screen and then select the method where a report template is desired. Select **Edit**.
- 2 From the method tabs, select **Reports**.
- 3 From the list of *Available Report Templates*, select one or more templates to associate with the method. Then click on the **Add** button.
- 4 If automated report generation is desired, select the check box labeled *Auto-Report All Selected Reports*. This will automatically generate all associated reports at the end of the data analysis.
- 5 To remove an unwanted report, simply select the unwanted report and click the **Remove** button.
- 6 Once all changes have been made, click the **Save** button to save the method or **Save As** to save the method as a different method name.

Creating a new Report Template

When MicroLab PC is installed, it will also install an add-in to Microsoft Office's Word platform. The add-in allows the user to customize or create report templates for use within the MicroLab software platform.

NOTE

This feature is only supported on 32-bit installations of Microsoft Word 2010 or greater.

The use of this function requires knowledge of Microsoft Word that may not be covered in this manual.

To create a new report template:

- 1 Open Microsoft Word and create a new document.
- 2 Once this document is created, navigate to the View menu/tab.
- 3 A new feature has been added to the View Menu – MicroLab Reporting. This includes two buttons: Report Designer and Perform Merge.

Reviewing Results

- 4 To begin creating the document. Select the Report Designer function. The schema associated with MicroLab will appear as a menu on the right of the screen.
- 5 Decide the type of report that is needed and select it under Report Type. Types of reports include the following:
 - a Component Report: This will only show up if the Method has been designated as a component method in the method editor.
 - b Qualitative Search: This report template will only show up if the method has been designated as a qualitative search method in the method editor.
 - c Data Collect Only: This report template will only show up if the method has been designated as a Data Collect method in the method editor.
 - d Method Report: System level report for printing Method parameters.
 - e Log Report: System level report for printing the system log file.
- 6 Give the Report Template a name in the MicroLab Reporting Parameters block.
- 7 The Report Fields consist of parameter fields that are associated with the MicroLab Software. Fields can be located in a variety of categories for the user, from Results to Method Parameters. The user should take time to familiarize themselves with the different categories. It is important to note that each type of method has its own Method category and Result category. For example, a Qualitative Search method has two categories that are related to it – Hit List and Method Library. Information specific to this type of method and its resultant files will be found here. Whereas more general information would be found simply in Results or Method categories.
- 8 To add fields to the report, simply click and drag the field desired to the report template page.
 - a The field added will only print out the information requested. Since this is in Word, the user may add text at any point in time to identify fields or label material.
 - b It is not recommended to use tables other than the predefined tables as this will cause errors in the Report.
- 9 Predefined Tables for Component Reports and Search Hit Lists have been configured for the user to simply click and drag into the report template.
- 10 At any time, to preview what the report would look like, select the Preview Rep button located at the bottom of the MicroLab Reporting menu.
 - a This can also be accomplished through the Perform Merge function.
 - b It is always best to save the report and run true data against the method where the reports are assigned to determine if the report is showing all values necessary.

Reviewing Results

- 11 Once the Report has been edited appropriately, the file should be saved to the report template folder for MicroLab. This folder is typically located in C:\Users\Public\Documents\Agilent\MicroLab\rptTemplates.
 - a Save the file as docx file format.
- 12 There are several report templates that are supplied when the software is installed. They may be edited. However, it is highly recommended that the user save edited report templates as a different file name using the "Save As" function of word, so that the original templates are left intact.

9

Updates and Troubleshooting

Firmware update	79
Troubleshooting	79

Firmware update

Occasionally Agilent will release updates to the firmware (software contained in the FTIR spectrometer) to correct or expand upon the features that the system can provide. Firmware updates will be provided as Microsoft Windows executable files. These files may be provided directly to the customer, or made available as part of an update to the Agilent MicroLab PC application.

For Agilent 4300 Handheld FTIR firmware, updates are provided and installed as a separate executable within the MicroLab Mobile Software. Please refer to the appropriate instrument operation manual supplied with the system, or contact Agilent for more information.

Troubleshooting

Initialization failure

If you see this error message:

Instrument failed to initialize

Instrument returned error code: -2.

The application will exit; then power-cycle the instrument and restart the application.

Upon opening the software, check that the spectrometer is powered on, and connected to the controlling PC via USB cable or Bluetooth (if applicable). Check that the instrument is powered on (green LED displayed). If controlling the 4300 FTIR via MicroLab PC, ensure the instrument is in 'Pass-Through' mode. If synchronizing the 4300 FTIR, ensure the instrument is connected to the PC via USB, is in 'Pass-Through' mode and MicroLab Lite software is in use.

Report template creation failure

Refer to Page 76 for more information on requirements and steps to create or customize a report template.

Gain changes did not save

If the updated gain value is not saved and the instrument status indicator turns from green to yellow upon activating a method or starting a data collect, check the following:

- In MicroLab PC/MicroLab Mobile software, under **Methods** > Select the method > Click **Edit** > Navigate to the **Instrument** page, ensure that the 'Set Method Gain' checkbox is not selected.
- In the **Diagnostics** page (in MicroLab OQ, or, through **Advanced Features** in MicroLab PC/MicroLab Mobile) > Click on **Gain Adjust** > Adjust the gain value > Click on **Set Instrument Default Gain** to save the gain as instrument default. Selecting Set Method Gain only saves the gain to the method being used.

Database access issues

If you see this error message when attempting to connect to the server after an SDA installation (in 21 CFR part 11 environment):

Error: Server Connection Error

For Scenario 1 installations, restart the PC and open SDA again to successfully connect the server.

For Scenario 2 and 3 installations, ensure the PCs are visible to on the network, disable all firewalls and restart the PCs. Attempt to connect to the SDA server again.

Refer to the 21 CFR part 11 installation instructions for more information.

Ensure that the user is assigned to a Group and Project that has access to both System Check Database and Public Database if running System Check test in MicroLab PC or MicroLab OQ. Refer to SCM User's Guide for more information.

Appendix A: MicroLab File Type

The following table describes the different file types that MicroLab uses and accepts.

Table 1 MicroLab File Type

File Type	File Extension	Comments
Agilent Library Files	*.a2l *.a2x *.lib	All three files are generated and stored together when a library is created in MicroLab PC/Lite. When exporting a library, all three files must be together. <ul style="list-style-type: none"> *.a2l file contains the actual library contents; *.a2x file is the associated blank results holder; *.lib file contains the library title for identification.
Agilent Method File	*.a2m	Method file is used to store one of the following method types: <ul style="list-style-type: none"> Data collect only, or Qualitative (library) search, or Component type methods.
Agilent Result File	*.a2r	This is a spectral file format, and generates one of the three possible result file sub-types according to the method type selected: <ul style="list-style-type: none"> Spectral results Library results with normalized spectra Component results and spectra
Agilent Security Setting File	*.a2s	This file stores user login settings and password. It is an internal file and should not be moved or deleted.
MicroLab compatible file types		
Spectral File	*.asp	MicroLab PC/Lite can view and import this spectral file type and/or auto export this file type.
Thermo Galactic / GRAMS	*.spc	MicroLab PC/Lite can view and import this spectral file type and/or auto export this file type.
GRAMS PLS1 Text Model	*.txt	The text format of GRAMS model's instructions is implemented into a component method. This file is generated by GRAMS IQ software after appropriate model building.
Eigen Vector Models	*.xml	MicroLab PC/Lite uses XML file format to generate a quantitative result within a component method. Only applicable to PLS1 multivariate model type.
Agilent MicroLab Quant Model	*.mqm	Generated by MicroLab Quant, and can be used by MicroLab Quant/PC/Lite in component method to generate a numerical result.
MicroLab Quant Project	*.mqp	It is used to save MicroLab Quant workflow and is only applicable to MicroLab Quant.
Agilent MicroLab Expert Quant Model File	*.a2q	This file is used for MicroLab PC, and is only generated with MicroLab Expert software package v1.1. and above

Appendix

This page is intentionally left blank.

In This Book

The manual describes the following:

- Introduction
- MicroLab Mobile
- MicroLab PC
- MicroLab Quant
- MicroLab OQ
- MicroLab with 21 CFR part 11
- Measuring Samples
- Reviewing Results
- Updates and Troubleshooting

www.agilent.com

© Agilent Technologies, Inc. 2024

Edition 10, 1/2024



0020-410

